

# NewsLink



A NEWSLETTER OF LINK CHILD CARE RESOURCE & REFERRAL

## JANUARY.FEBRUARY.MARCH 2025

Brrr! Jack Frost is back and he is nipping at our noses! With the holidays behind us, the darkness and colder weather of Winter can cause a child's mood and health habits to take a bit of a dive, but you can help offset that with 5 simple strategies that support positive social-emotional growth and development:

1. Eat right. Balanced meals with a variety of foods help kids grow, develop, and stay healthy even when the snow is flying!
2. Keep moving. Start your day with yoga or a dance party. Exercise endorphins keep moods and energy levels up!
3. Monitor sleep. Too much or too little sleep can take a toll on a child's mental health. Have consistent bed times and nap times to provide balance.
4. Get some sunlight. Humans are basically houseplants with emotions and we need sun! Getting outside into fresh air can lift our mood and provide good vitamins.
5. Build in extra mood boosters. Plan intentional activities that will put a smile on a child's face and a little more pep in their step!

The Link Professional Development Training Team is ready to support you in discovering new ways to help you AND the children in your care beat the Winter Blahs! Let us help you find some joy today!



<https://happyhomeschooler.com/winter-activities-for-kids/>

### INSIDE THIS ISSUE:

Link CCR&R PDTT.....	2
PD Session Descriptions .....	4
PD Schedule .....	9
WV Child Care Credential Training Schedule .....	13
ECERS-3.....	15
WV ELSF Pre-K.....	16
Loose Parts .....	17
WVIT I R Administrators.....	18
WVIT I R Caregiver .....	19
WVIT I R Caregiver .....	20
DAP Workshop.....	21
FCCPBIS .....	22
Uncover the Roots.....	23
Building a Firm Foundation ...	24
Health & Safety Sessions.....	25
First Aid & CPR .....	28
You've Got TRAILS .....	29
Link Programs & Partners .....	31
Link CCR&R Information .....	40

# LINK CCR&R

## PROFESSIONAL DEVELOPMENT TRAINING TEAM

### **Cristie Dunbar**

Link CCR&R Director  
Cristie.R.Dunbar@wv.gov



### **Shannon Baldwin**

PD Supervisor  
Shannon.N.Baldwin@wv.gov



### **Samantha Davenport**

Infant Toddler Coaching Specialist  
Samantha.D.Davenport@wv.gov



### **Erin Ritchie**

Child Care Coaching Specialist  
Erin.A.Ritchie@wv.gov



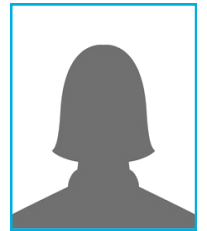
### **Becky Stewart**

Behavioral Consultant  
Rebecca.L.Stewart@wv.gov



### **Now Hiring**

Behavioral Consultant  
Open Position



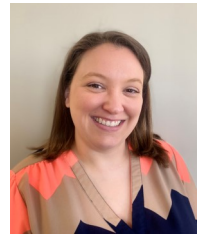
### **Amy Willis**

Early Childhood Specialist  
Amy.D.Willis@wv.gov



### **Jessica Wilcoxon**

Early Childhood Specialist  
Jessica.L.Wilcoxon@wv.gov



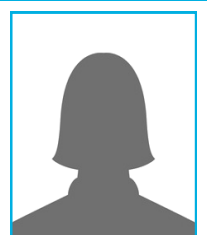
### **Claire Culver**

Infant Toddler Specialist  
Claire.E.Culver@wv.gov



### **Now Hiring**

Infant Toddler Specialist  
Open Position



### **Melisa Dennison**

Early Childhood Specialist-TRAILS  
Melisa.A.Dennison@wv.gov



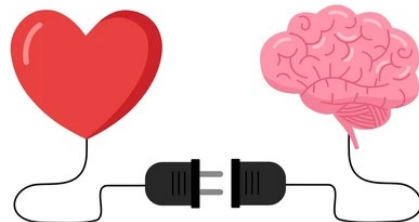
### **Amber Swindler**

Early Childhood Specialist-TRAILS  
Amber.L.Swindler@wv.gov



### **Becky Keaton**

Quality Improvement Specialist  
Becky.A.Keaton@wv.gov





# SOCIAL + EMOTIONAL DEVELOPMENT



## BIRTH-6 MONTHS



- Shows increasing alertness during waking periods
- Calms when rocked, swaddled, or held
- Smiles and coos to show happiness
- Shows distress when another baby is crying

### TRY THIS!

Hold and cuddle baby whenever you can. This is important for emotional growth.

## 6-12 MONTHS



- Shows interest in their image in a mirror
- Responds to own name
- Shows preference for certain foods, textures, sounds, and music

### TRY THIS!

Place unbreakable mirrors in different areas down low so baby gets to see own reflection.

## 12-18 MONTHS



- Sleeps for extended periods during the night by exploring ways to go back to sleep, such as pacifier, comfort object, thumb-sucking, or music
- Prefers to be with a familiar person
- Reacts to changes in routine by fussing, crying, or showing discontent
- Communicates needs through gestures

### TRY THIS!

Tell baby what is happening and what will come next – “After your milk it is time for a nap.” Routines let baby know what to expect.

## 18-24 MONTHS



- Recognizes self in mirror by smiling, patting, and vocalizing
- Can touch parts of the body when asked such as nose or foot
- Repeats behaviors to get attention—banging, vocalizing, etc
- Begins to demonstrate strong will and tests limits as she develops independence

### TRY THIS!

Have a small cup and spoon available so child can practice scooping food.

# Descriptions of Professional Development Sessions

## A General Overview of Assessments for Early Childcare Professionals

This training will provide information on the different types of assessments available to an early childcare professional. We will also review how to utilize the information gathered from assessments.

## Appropriate Supportive Environments

The environment can play a significant role in an early childhood classroom to promote social-emotional development and lessen challenging behaviors. This training will equip Early Childhood Professionals with the tools to set up their environment for optimal child social-emotional success.

## Appropriate Use of Technology

This training will look at ways that early education programs can appropriately integrate the use of technology in the learning environment. We will also review strategies to keep children safe online.

## Block Play: Building Up the Whole Child

This session offers participants the opportunity to learn the importance and value of block play in early childhood as well as some creative DIY ways to make their own blocks.

## Building a Firm Foundation with TRAILS One Block at a Time

In this series for family childcare providers, participants will receive an overview of the West Virginia Elements of Family Child Care Series. There are four sessions that discuss how children grow, organizing a program, how children learn, and building relationships. **\*There are technical assistance visits in addition to the sessions to support learning.**

## Building Partnerships with Families

During this training, participants will compare what a relationship and a partnership look like with the families of the children in their care. They will also examine the four building blocks of a partnership and gain new strategies on forming partnerships.

## Classroom Management

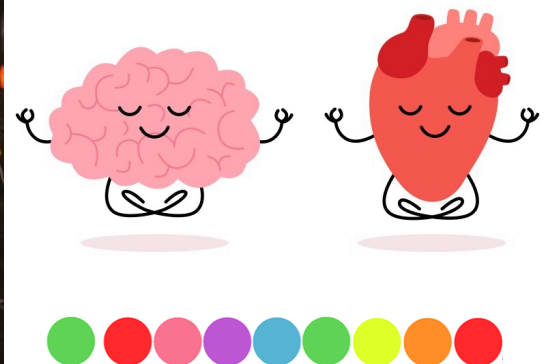
This training will provide five components of Classroom Management and review each component. We will also discuss different strategies to create an atmosphere that encourages a positive learning environment.

## Container Baby Syndrome

This training explores the effects of Container Baby Syndrome with a focus on the adverse developmental impacts it has on infants. Infant Toddler caregivers are given examples of restrictive equipment, developmental delays to look for, and how to prevent the overuse of containers.



<https://www.istockphoto.com/search/2/image-film?phrase=winter+family>





# Descriptions of Professional Development Sessions

## Dealing with Conflict

Are you constantly dealing with conflict in your classroom? Do you feel that all you are saying is, "No!" and "Stop that!" Do you spend a great deal of time resolving conflict in your room? During this session, participants will be introduced to the definition of conflict from a child's perspective. We will discuss various struggles that are occurring in the classroom, and together, we will deliberate problem solving strategies to assist with those classroom conflicts.

## Developmentally Appropriate Practice in Preschool Module

In this two-part module series participants will acquire updated research from NAEYC's 2020 DAP Statement by examining the principles, guidelines, and considerations of DAP; discover how to set up a developmentally appropriate environment for preschoolers; and wrap up with answering the age-old questions of 'Is circle time developmentally appropriate?' and 'How important is play?' **The proof of learning will be a one-hour TA visit about implementing DAP in their classroom.**

## ECERS-3

This session will review each section of the assessment, scoring, and the importance of using this rating scale. Participants will be given the opportunity to take part in activities to help them better understand what to look for when using this assessment tool.

## Elements of Effective Classroom Management

This session will discuss the elements of effective classroom management. Participants will learn about classroom management and why it is so important. Room arrangement, scheduling, relationships and large/small groups will all be discussed in greater detail as they are the main focus of the elements of effective classroom management. Participants will engage in hands-on activities and be asked to think about and reflect on different topics throughout the training.

## Family Child Care Positive Behavior Intervention and Supports (FCCPBIS)



The Family Child Care Positive Behavior Intervention and Support Series consists of three, two-hour, modules on social emotional development supports in all Preschool settings. The modules are based on the Pyramid Model, which follows the public health model of prevention, promotion, and intervention. **To receive six hours of WV STARS credit, all modules must be completed.**

## Hands-On Play Party! A DIY Guide to Sensory Play

In this session, participants will review how sensory play enhances learning in early childhood, and discover easy DIY activities to help children explore the world through their senses.

## Inspiring Spaces = Learning Places

When children walk into your classroom what do they see? Is the space inviting, warm, clean, fun and well-organized or cluttered, dirty and chaotic? This session will help you see the importance of making your classroom an inspiring space full of wonder, excitement and engaging learning opportunities!

## Loose Parts Play: The What, Why & How Module Series

In this 5-part series, participants will learn WHAT loose parts play is, WHY it is important and its benefits, as well as HOW to implement it for the children in their care.

## Planning Your Professional Growth



This training focuses on professional growth of early education providers and how to identify goals for the future.



*"Frustration, anger, and fear shut down the thinking parts of our brain. When a child is dysregulated, he cannot access the smartest part of the brain until his emotions are calmed."*

*~ Michael Haggen*



# Descriptions of Professional Development Sessions

## Quality Counts

Why does high-quality childcare matter? Because the need for quality childcare has never been greater! But what does it look like in our state and how can we help? Through group discussion and the use of media, early childhood educators will examine program supports that are necessary to achieve and maintain quality childcare and the important role they play within the process.

## Quality Environments FCCERS-3 Overview

In this training session family childcare providers will be introduced to the Family Child Care Environment Rating Scale. Participants will discuss how to use it in their environments, why it is used to promote quality care, and how it relates to the Tiered Reimbursement Program in WV. Family Child Care providers will get a basic understanding for the FCCERS and be presented with an opportunity for further training in this area.

## Sensory Processing Difficulties and the Impact on Classroom Behavior

Participants will be introduced to the 8 sensory systems humans use to learn about the world. We will look at how difficulties with these sensory systems can impact child behavior in a classroom setting. Examples of classroom and instructional adaptations and modification to help children with sensory difficulties succeed in a classroom setting will be provided. Participants will be given an opportunity to brainstorm additional strategies to meet the unique sensory needs of the children in their care.

## Social-Emotional Development and Dramatic Play

In this session, participants will learn the importance and benefits of social-emotional development and dramatic play and how they are connected. Milestones and social skills will also be reviewed. The different types of dramatic play and the social-emotional development and skills that can be observed during play will also be outlined while participants explore what they can do to promote the merging of the two.

## Uncover the Roots of Challenging Behaviors

This one-day conference will focus on ideas and strategies found within "Uncover the Roots of Challenging Behavior" by Michelle Salcedo, M.Ed. to help guide providers toward shifting the focus from the child exhibiting challenging behaviors to factors in the environment that may be contributing.

## Understanding ACES (Adverse Childhood Experiences): ACES 101

During this training session participants will be introduced to the concept of Adverse Childhood Experiences (ACE's) through awareness and education. We will discuss what ACEs are, the impact they have on children and adults, and become familiar with the 10 types of ACEs.



Be  
who you needed  
when you were  
younger



# Descriptions of Professional Development Sessions

## Utilizing the Environment Rating Scale to Achieve Higher Program Quality

This session will include an overview of the most recent versions of the Environment Rating Scales as well as information on how to use the results from the self-assessment to improve program quality through goal setting and the creation of action plans and professional development plans. This training will be applicable to staff and administrators of childcare centers, facilities, and family childcare home programs.

## WV Early Learning Standard Framework Pre-K with Lesson Planning Module

In this 3-part module series geared towards Pre-K teachers, you will receive an in-depth look at the WV Early Learning Standard Framework. We will discuss each of the content areas, domains, clusters, and standards and how to connect them to a lesson plan. As a group, we will brainstorm ways teachers can meet the goals in the standards. At the end of the series, teachers will have a completed lesson plan to take with them to reference when planning future lessons and activities.

## WVI/T I-R Professional Development Program: Administrator Modules

Administrators will get a preview of the training caregivers will participate in throughout WVIT II. They will also explore their role in supporting the caregivers in their professional development journey.

## WVI/T I-R Professional Development Program: Caregiver Modules

Professional development is an ongoing process. Trainers and administrators work together to monitor the personal and professional growth of infant/toddler caregivers and help to develop a plan that responds directly to the needs of the children in their care.



EARLY CHILDHOOD

# Social Emotional Development

AGES  
3-8

What are different areas of social-emotional growth?



- **Temperament**: how a child acts and responds to different people and situations
- **Attachment**: an emotional bond between a child and caregiver
- **Social Skills**: child's ability to get along with other children or adults
- **Regulating Emotions**: child's ability to control their emotions and reactions

What are social-emotional skills?



- Interactions with peers and adults
- Recognition ability
- Expressing emotions
- Regulating emotions
- Impulse control
- Social understanding
- Empathy

How do social-emotional skills benefit a child's development?



- Resolve conflicts
- Make decisions
- Resist negative social pressure
- Gain awareness of how others feel
- Make and keep friendships
- Manage stress and anxiety



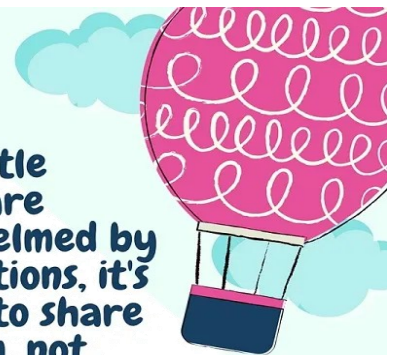


# January

DATE & TIME OF SESSION	LOCATION OF SESSION	CORE COMP TIER TARGET AGE	TITLE OF SESSION	PROFESSIONAL DEVELOPMENT PROVIDER
Tuesday January 14th 12:00pm to 2:00pm	<b>Online</b>	FCR Basic All Ages	Building Partnerships with Families	Amber Swindler
Tuesday January 14th 6:30pm to 8:30pm	<b>Link CCR&amp;R 2nd Floor</b>	CGD, FCR Basic All Ages	Dealing with Conflict	Becky Stewart
Wednesday January 15th 1:00pm to 2:00pm	<b>Online</b>	PL Basic All Ages	Quality Counts	Becky Keaton
Thursday January 23rd 1:00pm to 3:00pm	<b>Link CCR&amp;R 2nd Floor</b>	PL, AM Basic All Ages	Utilizing the Environment Rating Scale to Achieve Higher Program Quality	Becky Keaton
Thursday January 30th 6:00pm to 7:00pm	<b>Online</b>	EC, PL Basic Pre-K	Classroom Management	Erin Ritchie
Thursday January 30th 6:30pm to 8:30pm	<b>Link CCR&amp;R 2nd Floor</b>	CGD, EC Basic All Ages	Sensory Processing Difficulties and the Impact on Classroom Behavior	Becky Stewart
Friday January 31st 12:30pm to 2:30pm	<b>Coalfield CAP</b>	CGD, EC Basic Pre-K	Elements of Effective Classroom Management	Amy Willis



**When little people are overwhelmed by big emotions, it's our job to share our calm, not join their chaos.**



DrLaura.com

# February

DATE & TIME OF SESSION	LOCATION OF SESSION	CORE COMP TIER TARGET AGE	TITLE OF SESSION	PROFESSIONAL DEVELOPMENT PROVIDER
Tuesday February 4th 1:00pm to 2:00pm	<b>Online</b>	PL Basic All Ages	Quality Counts	Becky Keaton
Wednesday February 5th 10:00am to 12:00pm	<b>Link CCR&amp;R 2nd Floor</b>	CGD, EC Basic Pre-K	Elements of Effective Classroom Management	Amy Willis
Thursday February 6th 1:00pm to 3:00pm	<b>Link CCR&amp;R 2nd Floor</b>	COA Basic All Ages	A General Overview of Assessments for Early Childcare Professionals	Jessica Wilcoxon
Monday February 10th 9:00am to 11:00am	<b>Hamlin Library</b>	CGD, COA, EC, HSN Basic I/T	Container Baby Syndrome	Claire Culver
Monday February 10th 11:30am to 3:30pm	<b>Hamlin Library</b>	COA Basic All Ages	Developmentally Appropriate Practice in Preschool Module	Amber Swindler
Tuesday February 11th 6:30pm to 8:00pm	<b>Link CCR&amp;R 2nd Floor</b>	CGD, FCR, EC Basic All Ages	Understanding ACEs: ACEs 101	Becky Stewart
Thursday February 13th 2:00pm to 4:00pm	<b>C-K Library</b>	EC Basic All Ages	Appropriate Use of Technology	Jessica Wilcoxon
Thursday February 13th 5:30pm to 7:30pm	<b>Living Water Child Care</b>	CGD, EC Basic All Ages	Block Play: Building Up the Whole Child	Melisa Dennison
Wednesday February 19th 10:00am to 12:00pm	<b>Online</b>	CGD, EC Basic All Ages	Inspiring Spaces = Learning Places	Amy Willis
Tuesday February 25th 12:00pm to 2:00pm	<b>Online</b>	CGD, EC Basic All Ages	Appropriate Supportive Environments	Becky Stewart
Friday February 28th 1:00pm to 3:00pm	<b>Link CCR&amp;R 2nd Floor</b>	PL Basic All Ages	Planning Your Professional Growth	Becky Keaton

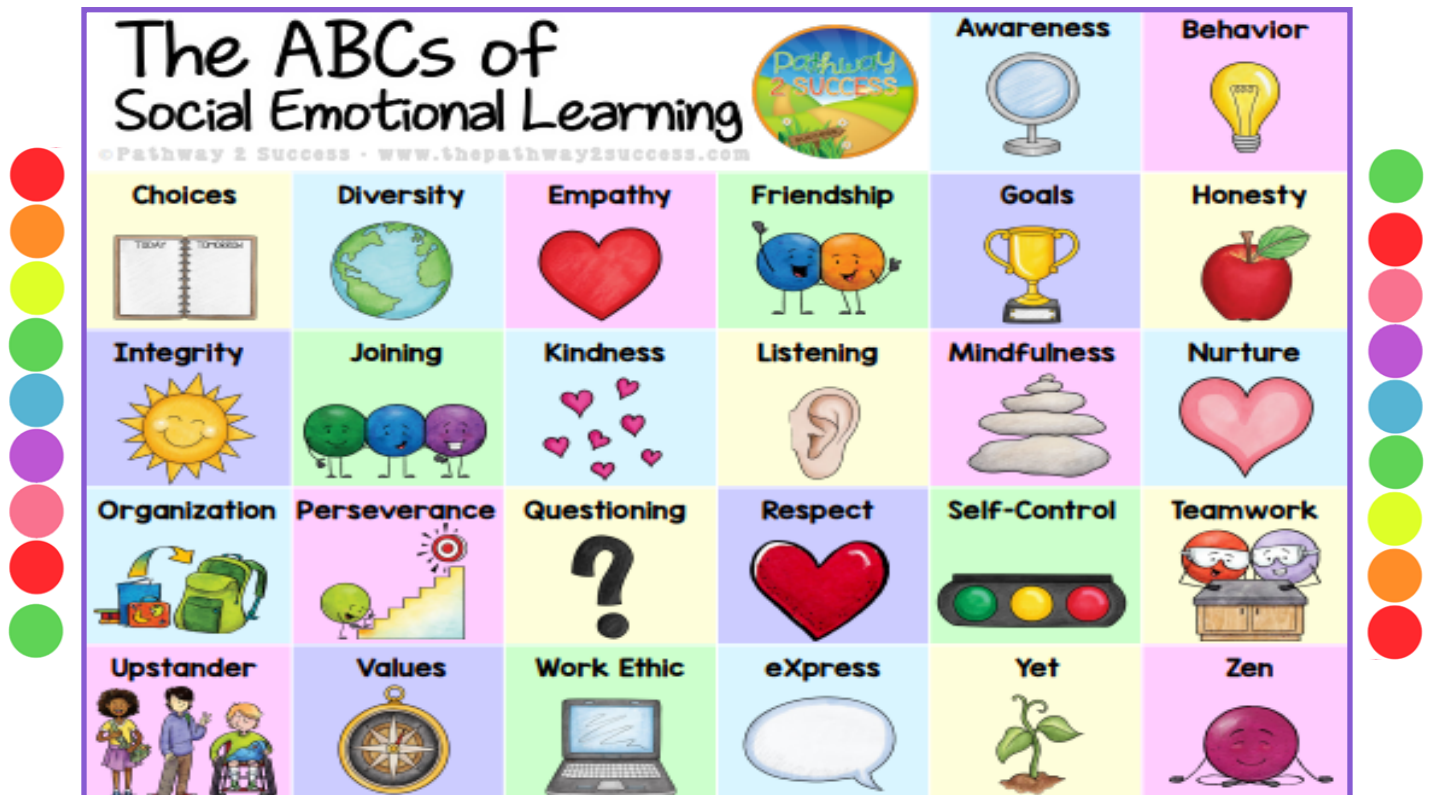
**DAP Workshop**





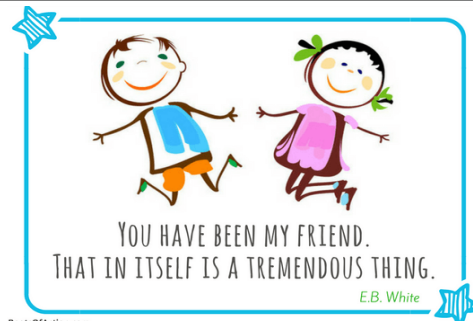
# March

DATE & TIME OF SESSION	LOCATION OF SESSION	CORE COMP TIER TARGET AGE	TITLE OF SESSION	PROFESSIONAL DEVELOPMENT PROVIDER
Tuesday March 4th 5:00pm to 7:00pm	<b>Link CCR&amp;R 1st Floor</b>	PL, AM Basic All Ages	Utilizing the Environment Rating Scale to Achieve Higher Program Quality	Becky Keaton
Wednesday March 5th 10:00am to 12:00pm	<b>Online</b>	CGD, EC Basic Pre-K	Social-Emotional Development and Dramatic Play	Amy Willis
Thursday March 6th 5:30pm to 7:30pm	<b>Living Water Child Care</b>	CGD, EC Basic All Ages	Hands-On Play Party! A DIY Guide to Sensory Play	Melisa Dennison
Thursday March 27th 1:00pm to 3:00pm	<b>Link CCR&amp;R 1st Floor</b>	PL, AM Basic All Ages	Planning Your Professional Growth	Becky Keaton
Thursday March 27th 6:00pm to 8:00pm	<b>Online</b>	EC, AM Basic All Ages (FCC)	Quality Environments FCCERS-3 Overview	Amber Swindler



# Module Series, Mini Series, & Workshops

DATE & TIME OF SESSION	LOCATION OF SESSION	CORE COMP TIER TARGET AGE	TITLE OF SESSION	PROFESSIONAL DEVELOPMENT PROVIDER
See Page 15	<b>Online</b>	EC Basic Pre-K	ECERS-3	Amy Willis
See Page 16	<b>Link CCR&amp;R 2nd Floor</b>	CGD, COA, EC Basic All Ages	WV Early Learning Standard Framework Pre-K with Lesson Planning Module (WV ELSF Pre-K)	Jessica Wilcoxon
See Page 17	<b>Living Water Child Care</b>	CGD, EC, HSN Basic All Ages	Loose Parts Play: The What, Why & How Module Series	Melisa Dennison
See Page 18	<b>Online</b>	PL Basic Admin	WVI/T I-R Professional Development Program: Administrator Modules	Claire Culver
See Page 19	<b>Online</b>	CGD, FCR, EC, HSN, PL, AM Basic I/T	WVI/T I-R Professional Development Program: Caregiver Modules	Samantha Davenport
See Page 20	<b>Link CCR&amp;R 2nd Floor</b>	CGD, FCR, EC, HSN, PL, AM Basic I/T	WVI/T I-R Professional Development Program: Caregiver Modules	Claire Culver
See Page 22	<b>Link CCR&amp;R 1st Floor</b>	CGD, EC, PL Basic All Ages	Family Child Care Positive Behavior Intervention Supports (FCCPBIS)	Becky Stewart
See Page 23	<b>Forrest Burdette</b>	CGD, FCR, EC Basic All Ages	Uncover the Roots of Challenging Behaviors	Link PDTT





# WV CHILD CARE CREDENTIAL TRAININGS

## 2024-2025



JULY 2024	AUGUST 2024	SEPTEMBER 2024
	Mind in the Making WVIT I-R WV ELSF I/T Understanding ACEs: ACEs 101	Emergency Preparedness
OCTOBER 2024	NOVEMBER 2024	DECEMBER 2024
The Growing Brain WVIT II WVEFCCS ITPBIS Quality Counts	Planning Your Professional Growth RR Spreading HOPE	Utilizing ERS to Achieve Higher Program Quality
JANUARY 2025	FEBRUARY 2025	MARCH 2025
ECERS-3 WV ELSF Preschool WVIT I-R	Quality Counts Understanding ACEs: ACEs 101	FCCERS-3 Planning Your Professional Growth FCCPBIS ITERS-3
APRIL 2025	MAY 2025	JUNE 2025
Utilizing ERS to Achieve Higher Program Quality ECPBIS RR Spreading HOPE	The Growing Brain Emergency Preparedness WV ELSF I/T Director's Toolbox	WVIT II ECERS-3



“If you want to support a child’s emotional health, you need to take care of your own emotions. Your tone, energy, and overall emotional presence serve as the child’s emotional guidepost.”  
 ~ Angela Pruess





# Social-Emotional Activities

Images from Kate Hadfield, Sarah Pecorino, Digika, Arnele Pepin, Kaitlynn Albari, Marchelle's KG Zone, Educlips

Pathway  
2 SUCCESS

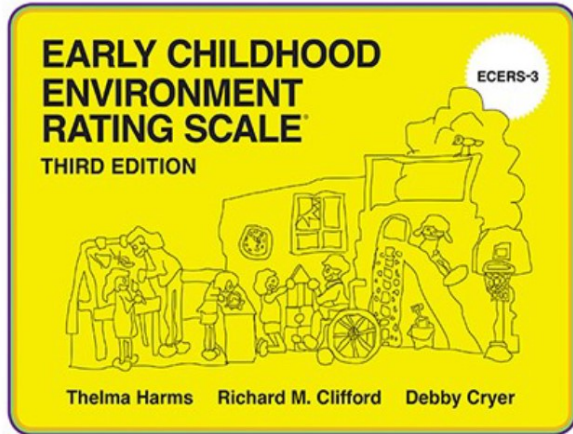
## For Every Classroom

\* SEL = Social Emotional Learning

<p>Daily Greetings</p> 	<p>Emotions Check-In</p> 	<p>Journal Writing</p> 	<p>Class Circle Time</p> 	<p>Morning Meeting</p> 
<p>Brain Breaks</p> 	<p>Gratitude List</p> 	<p>Mindful Morning Check-In</p> 	<p>Read Alouds</p> 	<p>Practice Coping Strategies</p> 
<p>SEL Chats</p> 	<p>End-of-the-Day Reflection</p> 	<p>Positive Affirmations</p> 	<p>SEL Art Activities</p> 	<p>Hold Class Meetings</p> 
<p>Weekly Goal Reflection</p> 	<p>SEL Skill of the Day or Week</p> 	<p>Show-and-Tell</p> 	<p>Shout Out Board</p> 	<p>SEL Quote of the Day</p> 
<p>SEL Crafts</p> 	<p>Practice Mindfulness</p> 	<p>Social Scenarios</p> 	<p>Play Games and Sports</p> 	<p>Daily Check-In Journal</p> 
<p>Daily Jobs</p> 	<p>AM / PM Check-In</p> 	<p>SEL Question of the Day</p> 	<p>Catch-Up and Organizing Time</p> 	<p>Group Challenges</p> 

# ECERS-3

## EARLY CHILDHOOD ENVIRONMENT RATING SCALE



This session will analyze and discuss each section of the assessment. We will practice scoring and we will discuss the importance of using this assessment rating scale. Participants will be given the opportunity to take part in activities to help them better understand what to look for when using this assessment tool.

**Location:** Virtual

### **Dates:**

Monday, January 6, 2024

Tuesday, January 7, 2024

6:30pm to 8:00pm

Optional Technical Assistance Follow-up

For More Information Contact:

Amy Willis  
Early Childhood Specialist  
304-523-9540 Ext: 3443  
Amy.D.Willis@wv.gov





# West Virginia Early Learning Standards Framework: Pre-K with Lesson Planning Module Series



In this 3-part module series geared towards those who work with preschool age children, you will receive an in-depth look at the WV Early Learning Standards Framework. Educators will learn about each of the content areas, domains, clusters, and standards in the framework.

With  
Jessica  
Wilcoxon

 January 8, 2025


 January 15, 2025

 January 22, 2025

 From: 10am-12pm

For more information, please contact Jessica at:

 [Jessica.L.Wilcoxon@wv.gov](mailto:Jessica.L.Wilcoxon@wv.gov)

 304-523-9540



# Loose Parts Play The What, Why & How Module Series

In this 5-part series, participants will learn **WHAT** loose parts play is, **WHY** it is important and its benefits, as well as **HOW** to implement it for the children in their care.

## Training Dates

**Module 1— January 9**

**Module 2— January 16**

**Module 3— January 23**

**Module 4— January 30**

**Module 5— February 6**



For more information,  
or to sign up, contact:

Melisa Dennison

Early Childhood Specialist—  
TRAILS

304-523-9540 Ext. 3462

Melisa.A.Dennison@wv.gov

Amber Swindler

Early Childhood Specialist—  
TRAILS

304-523-9540 Ext. 3480

Amber.L.Swindler@wv.gov

All Sessions will be held at  
Living Water Child Care & Learning Center  
212 Second Avenue  
Williamson, WV

All Sessions will be from 5:30-8:30 pm.



# WVIT I R ADMINISTRATOR'S COURSE



Early Childhood Education Administrators are introduced to the training that Caregivers undergo during the WVIT I R program. Furthermore, Administrators receive guidance on how to effectively support Caregivers in their professional development journey.

Completion of this course is mandatory for Administrators prior to the enrollment of their infant and toddler Caregivers in the WVIT I R program.



Session 1: Monday, January 13th  
10:00a-1:00p  
via Zoom



Session 2: Tuesday, January 14th  
11:00a-1:00p  
via Zoom



304-523-9064



[claire.e.culver@wv.gov](mailto:claire.e.culver@wv.gov)

# WVIT R Caregiver

**Presented  
Virtually**

**WEDNESDAYS**

**12:00–3:30 PM**

**JANUARY  
22, 2025**

Session 1

**JANUARY  
29, 2025**

Session 2

**FEBRUARY  
5, 2025**

Session 3

**FEBRUARY  
12, 2025**

Session 4

**FEBRUARY  
19, 2025**

Session 5

**MARCH  
12, 2025**

Session 6

**MARCH  
19, 2025**

Session 7

**MARCH  
26, 2025**

Session 8

**APRIL  
2, 2025**

Session 9

**APRIL  
9, 2025**

Session 10

**APRIL  
16, 2025**

Session 11

**APRIL  
23, 2025**

Session 12

**There will be 2 required  
TACIT visits scheduled  
between Sessions 5–6  
and following Session 12.**

**For more information contact:  
Samantha Davenport  
Infant Toddler Coaching Specialist  
Samantha.D.Davenport@wv.gov**





Session 1	Tuesday January 28th	Link Office: 1:00pm-4:30pm
Session 2	Tuesday February 4th	Link Office: 1:00pm-4:30pm
Session 3	Tuesday February 11th	Link Office: 1:00pm-4:30pm
Session 4	Tuesday February 18th	Link Office: 1:00pm-4:30pm
Session 5	Tuesday February 25th	Link Office: 1:00pm-4:30pm



For more information, please contact:  
 Claire Culver, Infant Toddler Specialist  
[claire.e.culver@wv.gov](mailto:claire.e.culver@wv.gov)

### TACIT VISITS

Session 6	Tuesday March 18th	Link Office: 1:00pm-4:30pm
Session 7	Tuesday March 25th	Link Office: 1:00pm-4:30pm
Session 8	Tuesday April 1st	Link Office: 1:00pm-4:30pm
Session 9	Tuesday April 8th	Link Office: 1:00pm-4:30pm
Session 10	Tuesday April 15th	Link Office: 1:00pm-4:30pm
Session 11	Tuesday April 22nd	Link Office: 1:00pm-4:30pm
Session 12	Tuesday April 29th	Link Office: 1:00pm-4:30pm

### TACIT VISITS

**PLEASE NOTE:**  
 SESSIONS WILL BE HELD IN  
 PERSON AT THE LINK OFFICE  
 611 7TH AVENUE,  
 HUNTINGTON  
 SESSIONS 1, 5, AND 12 ARE  
 MANDATORY

# DEVELOPMENTALLY APPROPRIATE PRACTICE: *Infants through Preschoolers*

## 1-DAY TRAINING WORKSHOP

### *Container Baby Syndrome*

Instructor: Claire Culver  
9:00am-11:00am

### *Lunch Break*

Lunch on your own  
11:00am-11:30am

### *Developmentally Appropriate Practice in Preschool Module 1*

Instructor: Amber Swindler  
11:30am-1:30pm

### *Developmentally Appropriate Practice in Preschool Module 2*

Instructor: Amber Swindler  
1:30pm-3:30pm

**When:** Monday, February 10, 2025

**Location:** Hamlin-Lincoln County Public Library  
7999 Lynn Ave, Hamlin, WV 25523

**Contact:** Claire Culver-Infant/Toddler Specialist  
304-528-3434

Claire.E.Culver@wv.gov  
or

Amber Swindler- TRAILS Early Childhood Specialist  
304-528-3480  
Amber.L.Swindler@wv.gov



**SIGN UP FOR EACH COURSE ON WV STARS**



# FAMILY CHILD CARE PBIS

## Family Child Care Positive Behavior Interventions and Support

**Family Child Care Positive Behavior Interventions and Support Series:** This series concentrates on social and emotional supports of children in Family Child Care settings. Based on the Pyramid Model, this three-session, six-hour course will discuss evidence-based interventions that promote social, emotional, and behavioral development.



### Please Note:

Participants will need to attend all six hours and finish a Proof of Learning at the end of the training to receive WV STARS hours.



### Location:

Link Office - 1st Floor Conference Room  
611 7th Ave.  
Huntington, WV 25701

### Dates & Times:

Mondays:  
March 3rd, March 10th, March 17th  
6:30pm - 8:30pm

### For More Information

#### Contact:

Becky Stewart  
Behavioral Consultant  
E: [rebecca.l.stewart@wv.gov](mailto:rebecca.l.stewart@wv.gov)  
P: 304-523-9540 ext. 3444





Tier II  
Conference

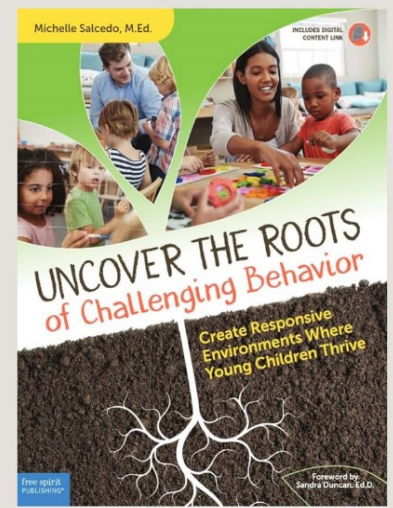


# Uncover the Roots Conference

**Saturday, March 15, 2025  
9:00am - 4:00pm**

In this one-day conference, we will focus on ideas and strategies found within "Uncover the Roots of Challenging Behavior" by Michelle Salcedo, M.Ed. to help guide providers toward shifting the focus from the child exhibiting challenging behaviors to factors in the environment that may be contributing.

**Presented By:  
The Link Professional  
Development Training Team**



**6 Hours  
WV STARS  
Credit**

**Location:**

Forrest Burdette  
2848 Putnam Avenue  
Hurricane, WV 25526



# Building a Firm Foundation with TRAILS: One Block at a Time

**Module 1:**  
How Children Grow

**Module 2:**  
Organizing Your Home & Day

**Module 3:**  
How Children Learn

**Module 4:**  
Building Positive Relationships



**Contact TRAILS today for more information!**

Melisa Dennison  
Early Childhood Specialist-TRAILS  
Melisa.A.Dennison@wv.gov  
304-528-3462

Amber Swindler  
Early Childhood Specialist-TRAILS  
Amber.L.Swindler@wv.gov  
304-528-3480



# Online Trainings

## January 2025-March 2025

Date and Time	Training Topic	Trainer
1/6/25 5:30-8:30 PM	<b>Medication Administration</b> 	Lisa Galford
1/7/25 7:00-8:00 PM	<b>Ear Infections</b>	Kelly Amos
1/17/25 5:30-8:30 PM	<b>Medication Administration</b> 	Kelly Amos
1/20/25 7:00-8:00PM	<b>Morning Health Checks</b>	Allison Harker
1/21/25 6:00-7:00 PM	<b>Infection Control</b>	Candace Morgan
1/23/25 5:30-8:30 PM	<b>Medication Administration</b> 	Candace Morgan
1/27/25 6:00-8:00 PM	<b>Communicable Diseases</b>	Candace Morgan
1/30/25 6:30-8:00 PM	<b>Medical Action Plans</b>	Lisa Galford
2/3/25 5:30-8:30 PM	<b>Medication Administration</b> 	Kelly Amos
2/4/25 12:30-1:00 PM <b>Lunchtime Learning</b>	<b>Morning Health Checks</b>	Allison Harker
2/11/25 5:30-8:30 PM	<b>Medication Administration</b> 	Lisa Galford
2/19/25 5:30-8:30 PM	<b>Medication Administration</b> 	Candace Morgan
2/20/25 7:00-8:00 PM	<b>Ear Infections</b>	Kelly Amos
2/25/25 6:30-7:30 PM	<b>Infection Control</b>	Candace Morgan
2/27/25 6:30-8:00 PM	<b>Medical Action Plans</b>	Lisa Galford
3/3/25 6:00-8:00 PM	<b>Communicable Diseases</b>	Candace Morgan
3/5/25 7:00-8:00 PM	<b>Respiratory Infections</b>	Kelly Amos
3/10/25 5:30-8:30 PM	<b>Medication Administration</b> 	Lisa Galford
3/11/25 7:00-8:00 PM	<b>Ear Infections</b>	Kelly Amos
3/18/25 12:00-1:00 PM <b>Lunchtime Learning</b>	<b>Infection Control</b>	Candace Morgan
3/20/25 5:30-8:30 PM	<b>Medication Administration</b> 	Candace Morgan
3/22/25 8:00-11:00 AM <b>Saturday Morning</b>	<b>Medication Administration</b> 	Kelly Amos
3/24/25 12:00-1:00 PM <b>Lunchtime Learning</b>	<b>Morning Health Checks</b>	Allison Harker
3/25/25 6:30-8:00 PM	<b>Medical Action Plans</b>	Lisa Galford





# West Virginia Child Care Nurse Health Consultants

*A program of River Valley Child Development Services*

Training Topic	Summary
Communicable Diseases	Tips for minimizing the spread of infection in programs as well as information about common communicable diseases.
Respiratory Infections	Basic information about the anatomy of the respiratory system and how it functions. Also includes information relating to many common infections including colds, influenza, and RSV.
Ear Infections	Information about why children are prone to ear infections. Signs and symptoms of ear infections and information about exclusion criteria.
Medical Action Plans	This training discusses the need for a document that outlines modifications that a child with special medical needs requires.
Medication Administration	Participants will be introduced to safe medication handling and administration practices. This training is required for providers to administer medication to children in the childcare setting.
Infection Control	Basic information about infection control concerns in the childcare setting. Information provided includes hand washing, sanitation and disinfection principles, and universal/standard precautions.
Morning Health Checks	Explanation about what a morning health check is as well as how one is conducted.

# Child Care Health Educators Online Trainings

January

- 9th Picky Eaters  
6:30 - 8:30 PM
- 13th All That Sugar and Fat  
6:30 - 8:30 PM
- 28th Oral Health  
6:30 - 8:30 PM

February

- 6th Beans...More Than Just Cute Songs  
6:30 - 8:30 PM
- 13th Let's Move  
6:30 - 8:30 PM
- 24th Let's Make a Menu  
6:30 - 8:30 PM

March

- 4th Identifying Environmental Hazards 1  
6:30 - 8:30 PM
- 13th Planting Seeds for Healthy Eating  
6:30 - 8:30 PM
- 24th Identifying Environmental Hazards 2  
6:30 - 8:30 PM

Register on  
[wvstars.org](http://wvstars.org)

## CPR & First Aid Classes

This list of agencies offering First Aid and CPR is made available to you for resource purposes only.  
**Link CCR&R is not responsible for the following trainings or registration for these trainings.**

**Boone County:** Kanawha Co. Red Cross: Call 340-3650 or [www.redcross.org](http://www.redcross.org)

**Cabell County:** Vicki Delaney: Call or Text 606-547-6144 or Email [paths20@aol.com](mailto:paths20@aol.com)  
American Red Cross: Call 304-526-2900  
Cabell County EMS: Contact Lisa Cooper 304-526-9797  
Salt Rock Fire Dept.: Call 304-733- 9040  
Goodwill Industries of KYOWVA Area, Inc.: Contact Andrea Lupson 304-523-7461 ext.417

**Lincoln County:** Dorothy or William Frazier: Call 304-778-3873

**Logan County:** LEASA County Public Rescue: Call 304-752-0917  
Logan Regional Medical Center: Contact Cindy Fleming—Education Dept. 304-831-1556

**Mason County:** Pleasant Valley Hospital: Call 304-675-4340

**Putnam County:** Active Sports Complex (aka Ayash Center): Contact Scott Nasby 304-741-4079

## **CPR & FIRST AID CLASSES**

Available in Boone, Cabell, Lincoln, Logan,  
Mason, Mingo, Putnam and Wayne Counties!



Learn CPR & First Aid



 MyCPR NOW™

**Be a lifesaver!**





# YOU'VE GOT TRAILS

Quarterly Tidbits From Your TRAILS Team

**Tips: Prepare Your Child Care Program for Winter Weather**

- Review essential supplies you will need
- Avoid unnecessary travel
- Check your emergency supply kit
- Dress children appropriately, request that parents provide extra clothes
- Keep your car's gas tank full
- Understand the hazards of wind chill
- Use space heaters wisely. Keep anything flammable at least 3 ft. away from the heater and never leave it unattended

For more preparedness tips, visit [childcareprepare.org](http://childcareprepare.org)



**12 WINTER BOOKS**  
*for little learners*



**DAB of GLUE will do**

**ROCKING SEESAW**



When the winter weather keeps the kiddos inside, check out some of the gross motor/active play items that TRAILS has to offer that are perfect for indoors, like this month's featured item.

*Welcome winter*

**Your TRAILS Team**



Melisa Dennison  
TRAILS Early Childhood Specialist  
[Melisa.A.Dennison@wv.gov](mailto:Melisa.A.Dennison@wv.gov)  
304-523-9540 Ext. 3462





Amber Swindler  
TRAILS Early Childhood Specialist  
[Amber.L.Swindler@wv.gov](mailto:Amber.L.Swindler@wv.gov)  
304-523-9540 Ext. 3480

# HOW TO REQUEST FROM SOUTRON



1

## LOG INTO SOUTRON

Log into Soutron using the username and password provided by TRAILS.

2

## SEARCH FOR TOYS

Search for toys by either typing in key words or searching by interest area. Bonus tip: You can also filter results by age!

3

## CHECK THE BOX

Click the box to the right of the desired item. If item says “1 copy currently available,” then we have it in stock right now!

4

## REQUESTING ITEM

Click “Actions” in the left corner, then click “Request.” A new screen will load.

5

## ENTER EMAIL

Click “Add address” and enter your email address.

6

## COMPLETE REQUEST

Click “Complete Request” in the bottom right corner.

7

## YOUR TOYS ARE ON THE WAY!

TRAILS will deliver your requested items (if available) at your next visit!



The West Virginia Breastfeeding-Friendly Child Care Designation (BFCCD) offers resources to child care providers who support breastfeeding mothers. A child care provider enrolled in the initiative will receive support from Infant/Toddler Specialists, Child Care Nurse Health Consultants, and Child Care Health Educators to complete the 10 steps of the initiative. Upon completion of the 10 steps, the site will receive a certificate of designation in addition to help with resources and start up.

FOR MORE INFORMATION,  
PLEASE CONTACT YOUR  
INFANT TODDLER COACHING  
SPECIALIST AT LINK CCR&R:

Samantha Davenport  
Samantha.D.Davenport@wv.gov  
304-523-9540 ext. 3479

TO APPLY FOR THE  
BREASTFEEDING-  
FRIENDLY CHILD CARE  
DESIGNATION:

1. Go to [wvit.org](http://wvit.org)
2. Click on BFCCD at the top of the page.
3. Read through the initiative description, including the 10 steps to receive the designation.
4. Follow the directions to submit your application.





# All About T.R.I.P.

## What is T.R.I.P.?

The Traveling Resources for Infants/Toddlers Program, or T.R.I.P., is a collaborative project combining the expertise of the Infant Toddler Coaching Specialist, the TRAILS Early Childhood Specialists, and the Infant Toddler Specialists. This team works together to support Family Child Care Providers in homes and facilities in caring for our youngest population, infants and toddlers. This support, depending on the unique needs of the Providers, can include specialized training, technical assistance, outreach visits, provision of infant/ toddler resources, and more, all with WV STARS credit attached. Contact us today for more information on T.R.I.P.

## Your T.R.I.P. Team:

Infant Toddler Coaching Specialist  
[Samantha.D.Davenport@wv.gov](mailto:Samantha.D.Davenport@wv.gov)

TRAILS Early Childhood Specialist  
[Melisa.A.Dennison@wv.gov](mailto:Melisa.A.Dennison@wv.gov)

TRAILS Early Childhood Specialist  
[Amber.L.Swindler@wv.gov](mailto:Amber.L.Swindler@wv.gov)

Infant Toddler Specialist  
[Claire.E.Culver@wv.gov](mailto:Claire.E.Culver@wv.gov)

Infant Toddler Specialist  
TBD



**Attention  
Providers**

Are you looking for ways to network and collaborate with other providers? Come join us to connect with and share some of your favorite tips, tricks and resources with other eager providers!

# **CARING AND SHARING COLLABORATIVE PARTNERSHIPS**



Location: Link CCR&R  
611 7th Avenue  
Huntington, WV 25701

Date: March 4, 2025

Time: 6:00pm - 7:00pm



For More Information  
Contact

Amy Willis



304-528-3443



[Amy.D.Willis@wv.gov](mailto:Amy.D.Willis@wv.gov)

---





**March 19-21, 2025**

# **Celebrating Connections**

**Leading The Way Through**

## **• Collaborative Relationships**

- Join us in 2025 for information about
- practices, policies, planning, and
- research; to have the opportunity to
- network with other professionals; and
- participate in a diverse array of early
- childhood education discussions.



**Registration opens  
December 2024**



**Charleston Coliseum & Convention Center  
Charleston, WV**

This program is being presented with financial assistance as a grant from the West Virginia Department of Health, the West Virginia Department of Human Services, and the West Virginia Department of Education, and is administered by West Virginia Early Childhood Training Connections and Resources, a program of River Valley Child Development Services.



## FOOD REIMBURSEMENT

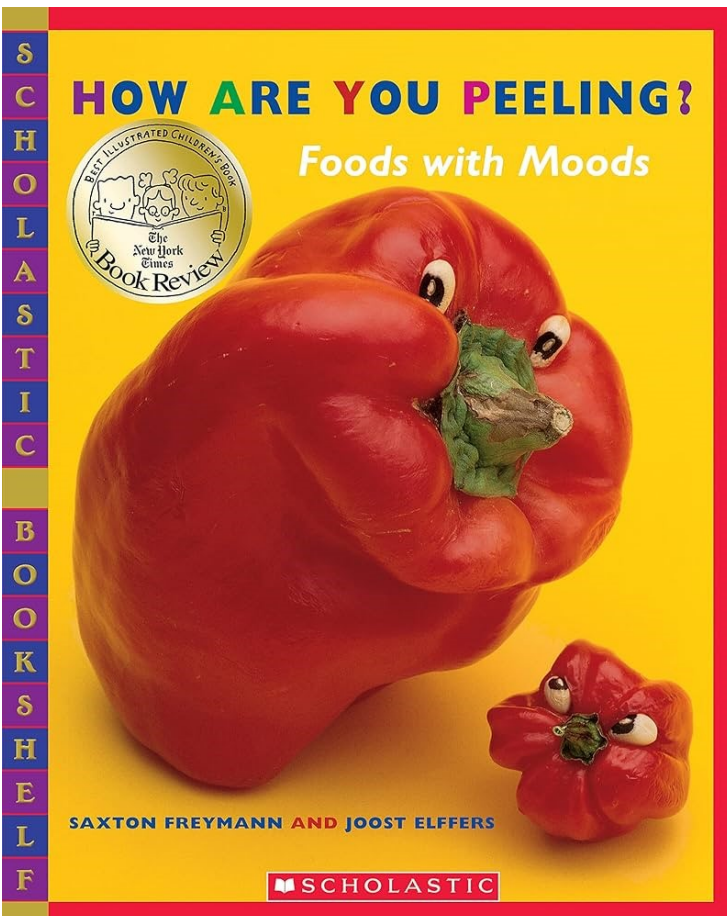


For information about enrolling in the Family Child Care Food Program to help with the costs of meals and snacks you serve the children in your care, please contact the following agency:



<p><b><u>Central Child Care</u></b></p> <p>Serving Boone County (304) 382-0797</p>	<p><b><u>Pride of Logan County</u></b></p> <p>Serving Logan County (304) 752-6868 or (304) 752-1047</p>	<p><b><u>River Valley Family Child Care Food Program</u></b></p> <p>Serving Cabell, Lincoln, Mason, Mingo, Putnam and Wayne Counties (304) 523-3417 ext.3446 or 1-304-751-5253</p>
--	---	--

In accordance with Federal law and U.S. Department of Agriculture (USDA) policy, this institution is prohibited from discriminating on the basis of race, color, national origin, sex, age, or disability. To file a complaint alleging discrimination, write USDA, Director, Office of Civil Rights, 1400 Independence Avenue SW, Washington, DC 20250-9410 or call, toll free, (866) 632-9992 (Voice). Individuals who are deaf, hard of hearing or have speech disabilities may contact USDA through the Federal Relay at (800) 877-8339 or (800) 845-6136 (Spanish). USDA is an equal opportunity provider. and employer.



Feeling Amused? Confused? Frustrated? Surprised? Try these feelings on for size. "This is a book that asks all the right questions. And leaves you feeling great no matter what the answers are! "Who'd have dreamed that produce could be so expressive, so charming, so lively and so funny? Freymann and Elffers have created sweet and feisty little beings with feelings, passions, fears and an emotional range that is, well, organic."

-The New York Times Book Review



# Congrats!

## Lorna & Ezra Adkins



The two newest recipients of the  
**WV Child Care Credential**







# FAMILY CHILD CARE COMMITTEE



## MEETING DATES 6:00PM

- October 21st, 2024
- January 20th, 2025
- April 21st, 2025
- July 21st, 2025

### Contact Us For More Information :

Kathy Baker  
Tiffany Gale  
wvfamilychildcarecommittee@gmail.com

The West Virginia Family Childcare Committee supports family childcare providers statewide by promoting best practices, advocating for supportive policies, and offering resources and training. By fostering collaboration, the committee ensures childcare settings are safe, nurturing, and educational, ultimately benefiting families and communities across West Virginia.



## CABELL/WAYNE FAMILY CHILD CARE ASSOCIATION



The Cabell Wayne Family Child Care Association would like to invite ALL providers from ALL counties to join. If you have any questions, feel free to call or text Kathy Baker, President, at 304-638-7578, or email her at [mrskathys@comcast.net](mailto:mrskathys@comcast.net) so you can start receiving information about the Association and other helpful information. They would like to have all providers' email addresses, so please email Kathy at the address above to be added to the listserv. They hope to see lots of new providers at the meetings.



Are you interested in making \$6 more per child per day???? If so, contact Kathy Baker at 304-638-7578 or email at [mrskathys@comcast.net](mailto:mrskathys@comcast.net) for more details.



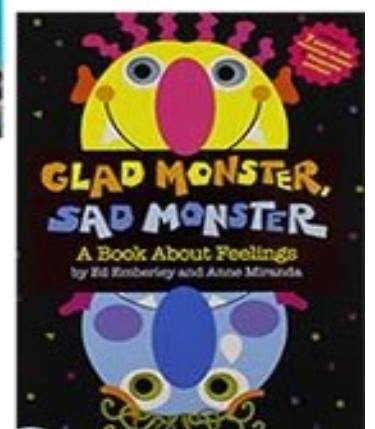
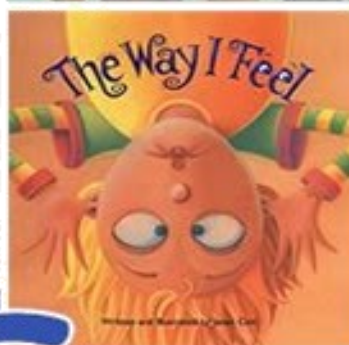
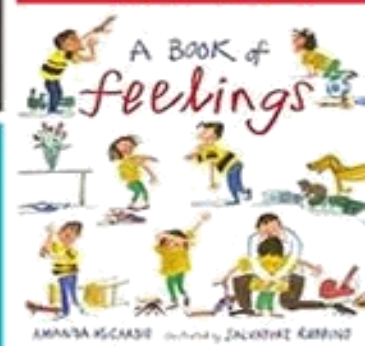
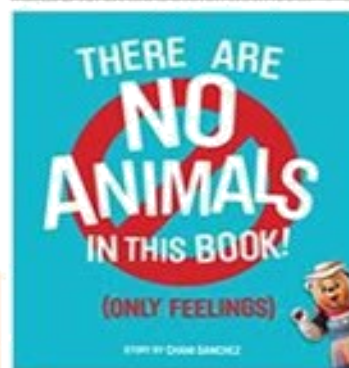
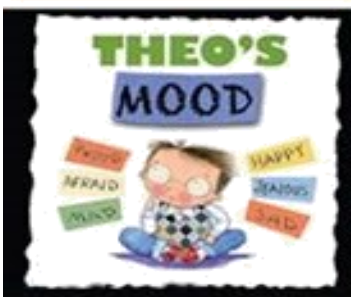
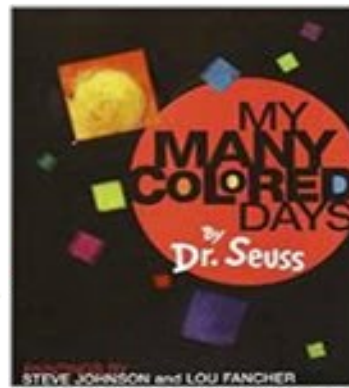
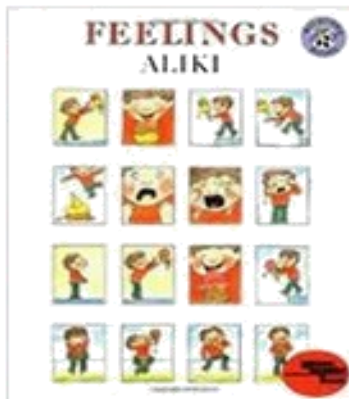
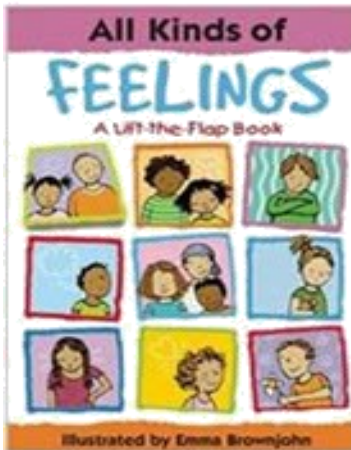
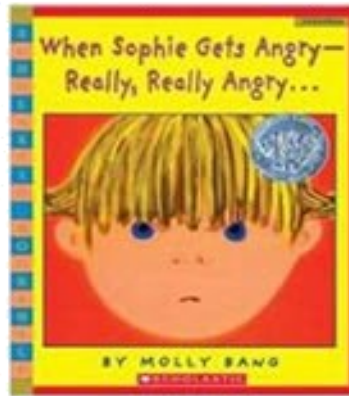
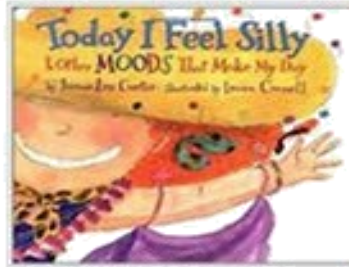
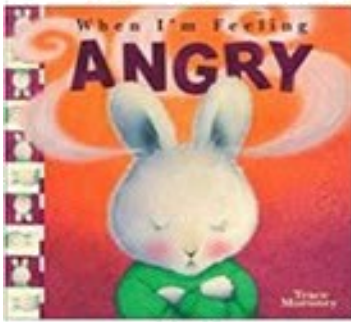
*“When kids’ emotions are high, their logic and language are low. So, in a meltdown, don’t reason with them. Connect. Hold space. Be.”*

*~ Stephanie Pinto*





# MANAGING BIG EMOTIONS SERIES



# Awesome Books About Emotions



**LINK CHILD CARE  
RESOURCE &  
REFERRAL**

Link Child Care Resource & Referral is a program of River Valley Child Development Services, Inc. and is being presented with financial assistance as a grant from the West Virginia Department of Human Services.

Visit us on the web:  
[www.linkccrr.org](http://www.linkccrr.org) or  
[www.rvcds.org](http://www.rvcds.org)

**COME SEE US!**



**MAIN LINK OFFICE**

611 7TH AVE.  
HUNTINGTON, WV 25701  
(800) 894-9540 OR  
(304) 523-9540  
(304) 697-4821 FAX



**LOGAN OFFICE**

19 CIRCLE DR.  
LOGAN, WV 25601  
(304) 752-3932  
(304) 752-2897 FAX

Link Child Care  
Resource &  
Referral  
611 7th Avenue  
Huntington, WV 25701



[www.facebook.com/](http://www.facebook.com/)



<https://www.shutterstock.com/search/winter-thank-you>