

# NewsLink

A NEWSLETTER OF LINK CHILD CARE RESOURCE & REFERRAL



APRIL.MAY.JUNE 2025

Robin Williams once said, "Spring is nature's way of saying, 'Let's party!'" and we couldn't agree more! The joy and vibrance that comes with spring is most definitely a time for celebration, especially since it provides a much needed break from being cooped up inside during the winter months. As the snow melts and the trees begin to bud, it's the ideal time for young children to explore the world around them. Spring is a great time for early childhood activities that encourage physical activity, hands-on learning, and lots of creativity! Some of our favorite springtime activities to engage children include nature walks and scavenger hunts, learning about weather patterns, planting flower and vegetable gardens, painting rocks, and much, much more! Contact the Link Professional Development Training Team today to see how we can help your early childhood program spring forward!



<https://inspirationintheheart.com/older-activities-for-kids/>



© Woolz.com. All Rights Reserved.



## SPRING READING LIST

### Infants

*Moo, Baa, La La La!* by Sandra Boynton  
*Look Look!* by Peter Linenthal  
*Spring* by Roger Priddy  
*Where Is Baby's Belly Button?* by Karen Katz  
*Animals* by Dawn Sirett

### Toddlers

*I Heard a Little Baa* by Elizabeth MacLeod, illustrated by Louise Phillips  
*Maisy's Nature Walk* by Lucy Cousins  
*My Animals* by Xavier Deneux  
*Higher! Higher!* by Leslie Patricelli  
*Countdown to Spring! An Animal Counting Book* by Janet Schulman, illustrated by Mello So

### Preschoolers and Prekindergartners

*Hurray for Spring!* by Patricia Hubbell, illustrated by Taia Morley  
*Mouse's First Spring* by Lauren Thompson, illustrated by Buket Erdogan  
*Rain* by Manya Stojic  
*Splash, Splash, Spring* by Jan Carr, illustrated by Dorothy Donohue  
*Wake Up, It's Spring* by Lisa Campbell Ernst

### Kindergartners to Second Graders

*Spring Goes Squish!* by Marty Kelley  
*The Lorax* by Dr. Seuss  
*The Giving Tree* by Shel Silverstein  
*My Abuelita* by Tony Johnston, illustrated by Yuyi Morales

### INSIDE THIS ISSUE:

Link CCR&R PDTT .....	2
PD Session Descriptions .....	4
PD Schedule .....	8
WV Child Care Credential Training Schedule .....	12
ECPBIS .....	13
WV ELSF I/T .....	14
The Growing Brain .....	15
ACES Workshop .....	16
ECERS-3 .....	17
ACES Workshop .....	18
WVIT II .....	19
Building a Firm Foundation ...	20
Health & Safety Sessions .....	21
First Aid & CPR .....	23
You've Got TRAILS .....	24
How to Use Soutron .....	25
Link Programs & Partners .....	26
Upcoming Events .....	32
Link CCR&R Information .....	33

# LINK CCR&R

## PROFESSIONAL DEVELOPMENT TRAINING TEAM

### Cristie Dunbar

Link CCR&R Director  
Cristie.R.Dunbar@wv.gov



### Shannon Baldwin

PD Supervisor  
Shannon.N.Baldwin@wv.gov



### Samantha Davenport

Infant Toddler Coaching Specialist  
Samantha.D.Davenport@wv.gov



### Erin Ritchie

Child Care Coaching Specialist  
Erin.A.Ritchie@wv.gov



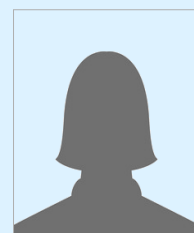
### Becky Stewart

Behavioral Consultant  
Rebecca.L.Stewart@wv.gov



### Now Hiring

Behavioral Consultant  
Open Position



### Amy Willis

Early Childhood Specialist  
Amy.D.Willis@wv.gov



### Jessica Wilcoxon

Early Childhood Specialist  
Jessica.L.Wilcoxon@wv.gov



### Claire Culver

Infant Toddler Specialist  
Claire.E.Culver@wv.gov



### Brian Hayton

Infant Toddler Specialist  
Brian.E.Hayton@wv.gov



### Melisa Dennison

Early Childhood Specialist-TRAILS  
Melisa.A.Dennison@wv.gov



### Amber Swindler

Early Childhood Specialist-TRAILS  
Amber.L.Swindler@wv.gov



### Now Hiring

Quality Improvement Specialist  
Open Position





WELCOME  
to our team!

## Brian Hayton

Infant Toddler  
Specialist



Hello, my name is Brian Hayton. I am a 2007 graduate of Shawnee State University and hold a Bachelor of Arts Degree in Social Science with an emphasis on Psychology and Sociology. I am very excited to be the new Infant/Toddler Specialist. I worked for Link as a case manager in 2019. I left right before Covid hit in 2020 and went to work for Lawrence County Developmental Services working with the Ohio Early Intervention program as a Service Coordinator and a Developmental Specialist. Before coming back to Link I was a Community Health Worker with CVS/Aetna working with the OhioRISE program where I worked in children and adolescent mental health.

When I am not working, I enjoy spending my time playing disc golf with my son Eli or going to watch musicals and plays with my daughter Allie. Last year, I had the opportunity to be in a show with my daughter. We were both in a production of Willy Wonka and the Chocolate Factory. I also enjoy playing music and serving on the worship team at Gateway Church. I spend a great deal of my time through the summer and fall as the Chesapeake High School Varsity Boys Soccer coach. One of my greatest passions in life is telling extremely corny Dad jokes.

I am very thankful for the opportunity to be back here and look forward to learning and growing in my new role. Link has always held a special place in my heart because of the amazing people and the incredible work they do. I am so glad to be home. I look forward to meeting and working with the great child care professionals of West Virginia.

# Descriptions of Professional Development Sessions

## **ACES 102: Overcoming Adverse Childhood Experiences**

This training will provide a brief overview of adverse childhood experiences (ACEs) and learn ways to overcome them. This training will examine and help you understand the variables related to resilience, protective factors, and safe, stable, and nurturing relationships and environments.

## **ACES 103: Preventing Adverse Childhood Experiences**

This training will provide an overview of adverse childhood experiences and the impact of trauma. It will also help you identify some of the root causes of adverse childhood experiences and look at the high-quality practices for preventing ACEs through individuals, families, schools, and communities.

## **Active Play: The Importance of Movement in Early Childhood**

This session will focus on the importance of movement for young children, both indoors and outdoors, with active play strategies to incorporate into your daily routines.

## **Building a Firm Foundation with TRAILS One Block at a Time**

In this series for family childcare providers, participants will receive an overview of the West Virginia Elements of Family Child Care Series. There are four 1-hour sessions that discuss how children grow, organizing a program, how children learn, and building relationships. **\*There are technical assistance visits in addition to the sessions to support learning.**

## **Building Strong Foundations: Supporting Infants and Toddlers Through the West Virginia Early Learning Standards Framework: Infant/Toddler**

This is a nine-hour module series, broken up into three 3-hour classes. This module series meets the criteria for the West Virginia Infant Toddler Specialization with the credentialing program. This course will provide an opportunity to explore the WV Early Learning Standards Framework for Infants and Toddlers by focusing on two developmental domains each class.

## **Burn-Out: Recognizing the Sign and Reducing the Symptoms**

This training looks at the causes of employee burn-out, identifies the symptoms, and offers suggestions to overcome.

## **Classroom Management**

This training will provide five components of Classroom Management and review each component. We will also discuss different strategies to create an atmosphere that encourages a positive learning environment.



<https://www.melwithkids.com/post/5-easy-spring-activities-for-kids-10supplies>





# Descriptions of Professional Development Sessions

## Communicating with Parents in Family Child Care

This session will provide participants with the opportunity to learn about the importance of regular, respectful, and effective communication with the families in their programs.

## Coping: Young Children and Emotional Distress. Why and How to Help.

Emotional distress in young children may appear differently than it does in adults. Identifying the typical emotional development of young children and the stressors they may face, this training outlines how stress reactions look in early childhood. Coping strategies which can be implemented to assist children and the adults caring for them will be highlighted.

## Cultural Awareness in an ECE Environment

This training will discuss the importance of cultural awareness in an early childhood educational program as well as strategies to incorporate multiculturalism into the program.

## Early Childhood Positive Behavior Intervention Supports (ECPBIS)

The Early Childhood Positive Behavior Intervention and Support Series consists of five, 2-hour, modules on social emotional development supports in all Preschool settings. The modules are based on the Pyramid Model, which follows the public health model of prevention, promotion, and intervention. To receive all 10 hours of WV STARS credit, all modules must be completed. **Participant's Director must have completed the ECPBIS Director Overview prior to the start of these modules.**

## ECERS-3

This session will review each section of the assessment, scoring, and the importance of using this rating scale. Participants will be given the opportunity to take part in activities to help them better understand what to look for when using this assessment tool.

## ECPBIS Director Overview

One-hour director's overview of the Early Childhood Positive Behavior Intervention and Support Series on social emotional development supports in all preschool settings. The modules are based on the Pyramid Model, which follows the public health model of prevention, promotion, and intervention. **Completion of this training is required of directors prior to staff participation in the ECPBIS Modules.**

## Emergency Preparedness

Participants will review and discuss the types of emergencies that can occur while children are in care and planning needed to keep children and workers safe during those events. Participants will receive support in creating the required emergency preparedness action plan. **1 hour TA Visit required.**

SPRING  
IS IN THE  
AIR



<https://www.howwemontessori.com/how-we-montessori/2019/01/montessori-outdoor-art-area.html>

# Descriptions of Professional Development Sessions

## **From Milestones to Stepping Stones: Knowing is Half the Battle!**

This session will give participants a better understanding of developmental milestones in relation to child development, including the benefits of and strategies for tracking them. Knowing what children should be doing at each developmental age, and the impact this has on children and parents will also be discussed.

## **Infant/Toddler Primary Care**

This training explores infant/toddler primary caregiving as a proven successful system for implementing relationship-based care. Participants explore the benefits and challenges of primary caregiving with time to examine their own experiences and share possible strategies for addressing challenges.

## **It's All about Emotions: Promoting Social-Emotional Development for School Readiness and Challenging Behavior Prevention**

Social Emotional Competence is often overlooked as a critical school readiness skill. Preschool children with age-appropriate or advanced social-emotional skills usually have an easier transition to kindergarten and fewer challenging behaviors. This training examines the essential social-emotional skills to be taught to promote school readiness and limit challenging behaviors. Resources available to teach these skills will be identified.

## **Let's Tell It Again! The Importance of Retelling Stories**

This session will focus on the art of storytelling and the importance of fostering retelling skills in young children to develop good oral language, vocabulary and comprehension.

## **RR Spreading HOPE**

This training will cover the effects of ACEs on health outcomes, the importance of positive childhood experiences, the research showing their mitigating effects on ACEs as well as the biologic basis for these effects. We will introduce the four building blocks of HOPE and discuss type 1 vs. type 2 thinking. The presentation will review some ideas of how to incorporate the HOPE Framework into practice.

## **Skillsets of a Leader**

This training is designed for individuals in positions of management or desire to be. We will discuss topics like what a leader is, effective leadership skills, facilitative leadership, along with identifying program goals and objectives.



THE WONDER  
OF TEACHING  
IS WATCHING  
CATERPILLARS  
BECOME  
BUTTERFLIES.



# Descriptions of Professional Development Sessions

## **Stress Management for Early Childhood Professionals**

Examining the correlation between stressors, stress reactions and the impact of stress on the body, this training identifies and practices stress reduction techniques which may be used with adults and the children in their care.

## **Teachable Moments: Beyond Questions**

Teachable moments happen every day in your environment beyond asking questions. In this training session participants will discover these moments happen through establishing a positive relationship with children, creating an effective daily schedule, and facilitating learning experiences through daily interactions.

## **Teamwork: Let's Work Together!**

Session will discuss teamwork at work, why it is important as well as what a good team member may be and how to go from being a good team member to being great. It will also get colleagues interacting with one another while having them work together as a team. In doing so, they will learn some things about their co-workers they may not have known prior to this session.

## **The Growing Brain from Birth to 5 Years Old**

This series will help participants understand the architecture and neurology of brain development. Participants will learn strategies to support language, cognition, prosocial behavior, and social-emotional development. We will learn how to reduce toxic stress that can negatively influence brain development of very young children.

## **Understanding ACEs (Adverse Childhood Experiences): ACES 101**

During this one-hour and a half training session participants will be introduced to the concept of Adverse Childhood Experiences (ACE's) through awareness and education. Participants will understand what ACEs are and the impact they have on children and adults and become familiar with the 10 types of ACEs.

## **West Virginia Infant/Toddler Professional Development Program II: Relationship-Based Care for Caregivers**

West Virginia Infant Toddler Professional Development Program II provides information about relationships with infants and toddlers. This is a module series that lasts for ten weeks. Participants must: be registered with WV STARS, complete WVIT I R Caregiver training, and have an administrator that has completed the WVIT II Administrator Professional Development Course to register.



# April

DATE & TIME OF SESSION	LOCATION OF SESSION	CORE COMP TIER TARGET AGE	TITLE OF SESSION	PROFESSIONAL DEVELOPMENT PROVIDER
Monday April 7th 12:00pm to 1:00pm	<b>Online</b>	CGD, EC, PL, AM Basic Admin	ECPBIS Director Overview	Becky Stewart
Monday April 7th 6:00pm to 8:00pm	<b>Link CCR&amp;R 2nd Floor</b>	PL Basic All Ages	Teamwork: Let's Work Together!	Amy Willis
Tuesday April 8th 6:00pm to 7:00pm	<b>Online</b>	EC, PL Basic Pre-K	Classroom Management	Erin Ritchie
Thursday April 10th 12:30pm to 2:00pm	<b>Online</b>	CGD, FCR Basic All Ages	RR Spreading HOPE	Becky Stewart
Thursday April 10th 1:30pm to 2:30pm	<b>Online</b>	PL Basic All Ages	Skillsets of a Leader	Jessica Wilcoxon
Tuesday April 22nd 1:30pm to 2:30pm	<b>Online</b>	CGD, FCR Basic All Ages	Cultural Awareness in an ECE Environment	Jessica Wilcoxon
Monday April 28th 6:00pm to 8:00pm	<b>Link CCR&amp;R 1st Floor</b>	CGD, EC Basic All Ages	Let's Tell it Again! The Importance of Retelling Stories	Melisa Dennison



A KIND  
WORD  
—is like a—  
SPRING  
DAY



# May

DATE & TIME OF SESSION	LOCATION OF SESSION	CORE COMP TIER TARGET AGE	TITLE OF SESSION	PROFESSIONAL DEVELOPMENT PROVIDER
Thursday May 8th 12:30pm to 1:30pm	<b>Online</b>	CGD, PL Basic All Ages	Stress Management for Early Childhood Professionals	Becky Stewart
Monday May 19th 6:00pm to 7:00pm	<b>Online</b>	EC Basic All Ages	Teachable Moments: Beyond Questions	Amber Swindler
Tuesday May 20th 6:00pm to 7:00pm	<b>Online</b>	FCR, PL, AM Basic All Ages	Communicating with Parents in Family Child Care	Melisa Dennison
Thursday May 22nd 6:00pm to 8:00pm	<b>Link CCR&amp;R 2nd Floor</b>	HSN Intermediate Pre-K	Emergency Preparedness	Amy Willis
Tuesday May 27th 1:00pm to 3:00pm	<b>Online</b>	CGD, EC Basic I/T	Infant/Toddler Primary Care	Claire Culver



## SPRING GARDEN SENSORY BIN



## SPRING GARDEN SENSORY BIN

This simple garden sensory bin is great for imaginative play; kids can bake flower cakes, make bouquets, and of course plant and grow their own gardens. It's perfect for a whole range of ages (just supervise the little ones around the beans or choose a different filler!). It's also great for talking about the growing process of flowers, identifying parts of flowers, and care of a garden. The best part? It's mess free! Dig, plant, and repeat without any dirt!

### Materials:

- Filler like garbanzo beans for easy to transfer "dirt"
- Various sizes of pots
- Artificial flowers
- Garden tools



# June

DATE & TIME OF SESSION	LOCATION OF SESSION	CORE COMP TIER TARGET AGE	TITLE OF SESSION	PROFESSIONAL DEVELOPMENT PROVIDER
Wednesday June 11th 12:30pm to 2:30pm	<b>Online</b>	CGD, EC Basic Pre-K	It's All about Emotions: Promoting Social-Emotional Development for School Readiness and Challenging Behavior Prevention	Becky Stewart
Thursday June 12th 1:30pm to 2:30pm	<b>Online</b>	PL Basic All Ages	Burn-Out: Recognizing the Signs and Reducing the Symptoms	Jessica Wilcoxon
Monday June 16th 6:00pm to 7:00pm	<b>Online</b>	CGD, EC Basic All Ages	Active Play: The Importance of Movement in Early Childhood	Melisa Dennison
Monday June 23rd 5:30pm to 7:30pm	<b>Hamlin Library</b>	CGD Basic All Ages	From Milestones to Stepping Stones: Knowing is Half the Battle!	Amy Willis
Wednesday June 25th 12:30pm to 2:30pm	<b>Online</b>	CGD, HSN Basic Pre-K	Coping: Young Children and Emotional Distress. Why and How to Help	Becky Stewart



<https://www.thebookee.com/blogs/bookee-blog/7-ways-to-get-outdoors-with-babies>





# Module Series, Mini Series, & Workshops

DATE & TIME OF SESSION	LOCATION OF SESSION	CORE COMP TIER TARGET AGE	TITLE OF SESSION	PROFESSIONAL DEVELOPMENT PROVIDER
See Page 13	<a href="#">Link CCR&amp;R 2nd Floor</a>	CGD, EC, PL Basic Pre-K	Early Childhood Positive Behavior Intervention Supports (ECPBIS)	Becky Stewart
See Page 14	<a href="#">Link CCR&amp;R 2nd Floor</a>	CGD, COA Basic I/T	Building Strong Foundations: Supporting Infants and Toddlers through the West Virginia Early Learning Standards Framework: Infant/Toddler	Claire Culver
See Page 15	<a href="#">Early Education Station</a>	CGD, FCR, EC, HSN Basic All Ages	The Growing Brain from Birth to 5 Years Old	Jessica Wilcoxon Samantha Davenport
See Page 16	<a href="#">Coalfield C.A.P.</a>	CGD, HSN All Tiers All Ages	ACEs Workshop	Amber Swindler
See Page 17	<a href="#">Online</a>	EC Basic Pre-K	ECERS-3	Amy Willis
See Page 18	<a href="#">Forrest Burdette</a>	CGD, HSN All Tiers All Ages	ACEs Workshop	Amber Swindler
See Page 19	<a href="#">Link CCR&amp;R 1st Floor</a>	CGD Advanced I/T	West Virginia Infant/Toddler Professional Development Program II: Relationship-Based Care for Caregivers	Claire Culver
See Page 20	<a href="#">TBD</a>	CGD Basic All Ages	Building a Firm Foundation with TRAILS: One Block at a Time	Melisa Dennison Amber Swindler





# WV CHILD CARE CREDENTIAL TRAININGS 2024-2025



JULY 2024	AUGUST 2024	SEPTEMBER 2024
	Mind in the Making WVIT I-R WV ELSF I/T Understanding ACEs: ACEs 101	Emergency Preparedness
OCTOBER 2024	NOVEMBER 2024	DECEMBER 2024
The Growing Brain WVIT II WVEFCCS ITPBIS Quality Counts	Planning Your Professional Growth RR Spreading HOPE	Utilizing ERS to Achieve Higher Program Quality
JANUARY 2025	FEBRUARY 2025	MARCH 2025
ECERS-3 WV ELSF Preschool WVIT I-R	Understanding ACEs: ACEs 101	FCCERS-3 ITERS-3 FCCPBIS
APRIL 2025	MAY 2025	JUNE 2025
ECPBIS RR Spreading HOPE	The Growing Brain Emergency Preparedness WV ELSF I/T	WVIT II ECERS-3



*“To plant a garden is to believe in tomorrow.”*  
~ Audrey Hepburn





# EARLY CHILDHOOD PBIS

## Early Childhood Positive Behavior Interventions and Support

### Early Childhood Positive Behavior Interventions and Support Series:

This series concentrates on social and emotional supports of children in preschool settings. Based on the Pyramid Model, this five-session, ten-hour course will discuss evidence-based interventions that promote social, emotional, and behavioral development.

### Please Note:

Directors will need to complete the  
Online Directors Overview on April 7th  
12:00pm - 1:00pm prior to staff  
participation in these modules.

*Please contact Becky Stewart to Register*

Participants will need to attend all ten  
hours and finish a Proof of Learning at  
the end of the training to receive WV  
STARS hours.



### Dates & Times:

Mondays: April 14th, 21st, 28th  
May 5th and 12th  
6:00pm - 8:00pm

### Location:

Link Office - 2nd Floor Conference Room  
611 7th Ave.  
Huntington, WV 25701

### For More Information

#### Contact:

Becky Stewart  
Behavioral Consultant  
E: [rebecca.l.stewart@wv.gov](mailto:rebecca.l.stewart@wv.gov)  
P: 304-523-9540 ext. 3444



## **BUILDING STRONG FOUNDATIONS**

**Supporting Infants and Toddlers Through  
the West Virginia Early Learning Standards  
Framework: Infant/Toddler**

**This is a nine-hour module series, broken into three 3-hour classes. This module series meets the criteria for the West Virginia Infant Toddler Specialization with the credentialing program. This course provides an opportunity to explore the WV Early Learning Standards Framework for Infants and Toddlers by focusing on two developmental domains each class.**

### **1 Module 1**

Thursday, May 1st 1:00p -4:00p

### **2 Module 2**

Thursday, May 8th 1:00p - 4:00p

### **3 Module 3**

Thursday, May 15th 1:00p - 4:00p

## **Location:**

**Link CCR&R  
611 7th Avenue  
Huntington, WV 25701**

**2nd Floor Conference Room**

**Participants will receive  
9 hours of WV STARS  
credit after successful  
completion of series and  
proof of learning.**

**For more information please contact:**

**Claire Culver  
Claire.E.Culver@wv.gov  
304-523-9540**



# The Growing Brain: From Birth to 5 Years Old

*Professional Development for Early Childhood Professionals*

Decades of research indicate that the early years of life are a period of exponential brain development, characterized by great opportunity and vulnerability dependent on the child's relationships and environment.

*The Growing Brain: From Birth to 5 Years Old* is an innovative professional development opportunity that provides a toolkit of how the brain develops, along with ways you can encourage healthy brain development in children from birth to 5 years old.

Participants will develop skills and strategies to:

- understand the architecture and neurobiology of brain development
- support language, cognition, prosocial behavior, and social-emotional development
- reduce toxic stress that can negatively influence brain development of very young children

For more information, visit  
[www.zerotothree.org/growingbrain](http://www.zerotothree.org/growingbrain).



## Make Plans Today

When: Every Tuesday starting May 6th  
through June 17th from  
5:30pm to 8:30pm

Where: Early Education Station  
817 30th St, Point Pleasant,  
WV 25550

## Hosted By



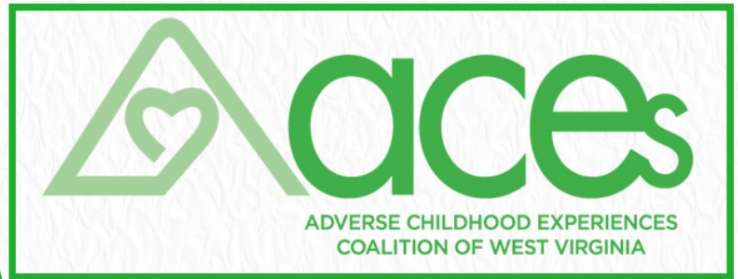
Jessica Wilcoxon  
Early Childhood Specialist  
[Jessica.L.Wilcoxon@wv.gov](mailto:Jessica.L.Wilcoxon@wv.gov)  
304-523-9540 ext. 3442

Samantha Davenport  
Infant Toddler Specialist  
[Samantha.D.Davenport@wv.gov](mailto:Samantha.D.Davenport@wv.gov)  
304-523-9540 ext. 3479



*The Growing Brain: From Birth to 5 Years Old* is brought to you by ZERO TO THREE Professional Development and Workforce Innovations. PDWI aims to elevate the knowledge, skills, and abilities of the early childhood development field.

For additional professional development resources and trainings, visit  
[www.zerotothree.org/PDWI](http://www.zerotothree.org/PDWI).



## JOIN US FOR AN **ACES WORKSHOP**

**Saturday, May 17, 2025**  
**10:00am-3:30pm**  
**Mingo County @ Coalfield C.A.P.**

**UNDERSTANDING  
ACES 101  
10:00AM-11:30AM**

**OVERCOMING  
ACES 102  
11:30AM-12:30PM**

**PREVENTING  
ACES 103  
1:00PM-2:00PM**

Following Preventing ACES 103 there will be a Q & A session from 2:00PM-2:30PM that participants must attend. From 2:30PM-3:30PM there will be a training session on how to use TRAILS online platform to request items from inventory. Must attend ACES Workshop to attend this session. Participants will receive 5 hours of WV STARS credit upon completion of 3 courses, Q&A session, and Soutron training.



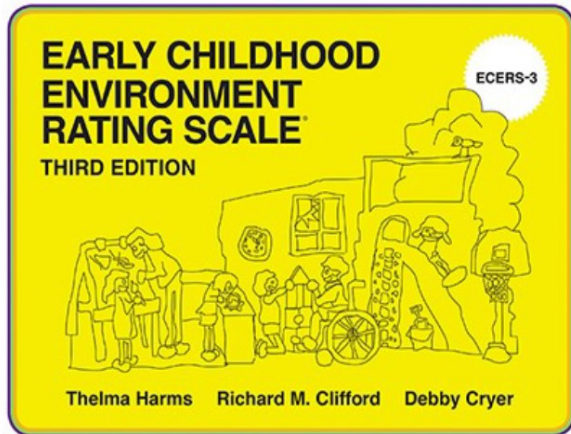
**FOR MORE INFORMATION AND TO REGISTER  
CONTACT:  
AMBER SWINDLER- TRAILS EARLY CHILDHOOD  
SPECIALIST**

**☎ 304-523-9540 ext. 3480    ✉ [Amber.L.Swindler@wv.gov](mailto:Amber.L.Swindler@wv.gov)**





# ECERS-3 EARLY CHILDHOOD ENVIRONMENT RATING SCALE



**Location:** Virtual

**Dates:**

Monday, June 2, 2025

Tuesday, June 3, 2025

6:30pm to 8:00pm

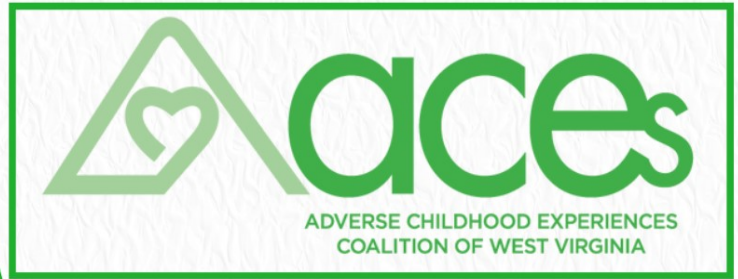
Optional Technical  
Assistance Follow-up

For More Information  
Contact:

Amy Willis  
Early Childhood Specialist  
304-523-9540 Ext: 3443  
[Amy.D.Willis@wv.gov](mailto:Amy.D.Willis@wv.gov)

This session will analyze and discuss each section of the assessment. We will practice scoring and we will discuss the importance of using this assessment rating scale. Participants will be given the opportunity to take part in activities to help them better understand what to look for when using this assessment tool.





## JOIN US FOR AN **ACES WORKSHOP**

**Tuesday, June 3, 2025**

**8:00am-12:30pm**

**Forrest Burdette Children's Outreach Ministries**

**UNDERSTANDING  
ACES 101**

**8:00am-9:30am**

**OVERCOMING  
ACES 102**

**9:30am-10:30am**

**PREVENTING  
ACES 103**

**11:00am-12:00pm**

There will be a Q&A session from 12:00-12:30 that participants must attend. There will be a training session from 12:30pm-1:30pm on how to use TRAILS online platform to request items from inventory. Must attend ACES Workshop to attend this session. Participants will receive 5 hours of WV STARS credit upon completion of 3 courses, Q&A session, and Soutron training.



**FOR MORE INFORMATION AND TO REGISTER  
CONTACT:  
AMBER SWINDLER- TRAILS EARLY CHILDHOOD  
SPECIALIST**

**☎ 304-523-9540 ext. 3480    ✉ [Amber.L.Swindler@wv.gov](mailto:Amber.L.Swindler@wv.gov)**







## WVIT II: RELATIONSHIP BASED CARE

Session 1	Tuesday, June 24th	12:00-3:30 pm
Session 2	Tuesday, July 1st	12:00-3:30 pm
Session 3	Tuesday, July 8th	12:00-3:30 pm
Session 4	Tuesday, July 15th	12:00-3:30 pm
Session 5	Tuesday, July 22nd	12:00-3:30 pm
Session 6	Tuesday, July 29th	12:00-3:30 pm
Session 7	Tuesday, August 5th	12:00-3:30 pm
Session 8	Tuesday, August 12th	12:00-3:30 pm
Session 9	Tuesday, August 19th	12:00-3:30 pm
Session 10	Tuesday, August 26th	12:00-3:30 pm

### Location:

Link CCR&R  
611 7th Avenue  
Huntington, WV 25701  
1st Floor Conference Room

### For More Information, Please Contact:

Claire Culver  
Infant Toddler Specialist  
[Claire.E.Culver@wv.gov](mailto:Claire.E.Culver@wv.gov)



## Building a Firm Foundation with TRAILS: One Block at a Time

### Module 1:

How Children Grow

### Module 2:

Organizing Your Home & Day

### Module 3:

How Children Learn

### Module 4:

Building Positive Relationships



**Contact TRAILS today for more information!**

Melisa Dennison  
Early Childhood Specialist-TRAILS  
Melisa.A.Dennison@wv.gov  
304-528-3462

Amber Swindler  
Early Childhood Specialist-TRAILS  
Amber.L.Swindler@wv.gov  
304-528-3480

# Online Trainings

## April 2025 - June 2025

Date and Time	Training Topic	Trainer
4/1/25 6:00-8:00 PM	Neonatal Abstinence Syndrome	Kelly Amos
4/3/25 5:30-8:30 PM	Medication Administration	Candace Morgan
4/8/25 12:00-1:00 PM <b>Lunchtime Learning</b>	Morning Health Checks	Allison Taylor
4/10/25 6:30-8:00PM	Diabetes in Child Care	Candace Morgan
4/16/25 5:30-8:30 PM	Medication Administration	Kelly Amos
4/17/25 6:00-8:00 PM	All About Allergies	Lisa Galford
4/22/25 5:30-8:30 PM	Medication Administration	Lisa Galford
4/29/25 6:00-8:00 PM	Communicable Diseases	Brittany Parsons
4/30/25 5:30-8:30 PM	Medication Administration	Allison Taylor
5/2/25 6:00-8:00 PM	Creepy Crawly Creatures	Kelly Amos
5/6/25 5:30-8:30 PM	Medication Administration	Candace Morgan
5/10/25 8:00-11:00 AM <b>Saturday Morning</b>	Medication Administration	Lisa Galford
5/13/25 6:00-8:00 PM	All About Allergies	Lisa Galford
5/14/25 6:30-8:00 PM	Diabetes in Child Care	Candace Morgan
5/16/25 5:30-8:30 PM	Medication Administration	Kelly Amos
5/21/25 6:00-8:00 PM	Summertime Safety	Allison Taylor
5/28/25 5:30-8:30 PM	Medication Administration	Allison Taylor
5/30/25 6:00-8:00 PM	Creepy Crawly Creatures	Kelly Amos
6/2/25 6:00-8:00 PM	Communicable Diseases	Candace Morgan
6/4/25 5:30-8:30 PM	Medication Administration	Candace Morgan
6/9/25 5:30-8:30 PM	Medication Administration	Lisa Galford
6/11/25 6:00-8:00 PM	Summertime Safety	Allison Taylor
6/17/25 5:30-8:30 PM	Medication Administration	Allison Taylor
6/23/25 6:00-8:00 PM	All About Allergies	Lisa Galford
6/26/25 6:30-8:00 PM	Diabetes in Child Care	Candace Morgan



Child Care Health Educators

# Online Trainings

APRIL

**02**

12:00 PM - 1:00 PM

***Nutrition Basics***

APRIL

**14**

6:30 PM - 8:30 PM

***Safe Sleep Practices***

APRIL

**30**

12:30 PM - 1:30 PM

***Infant Feeding***

MAY

**12**

6:30 PM - 8:30 PM

***New Recipe Ideas 1***

MAY

**20**

12:30 PM - 1:30 PM

***Childhood Obesity***

MAY

**29**

6:30 PM - 8:30 PM

***New Recipe Ideas 2***

JUNE

**03**

6:30 PM - 8:30 PM

***Stress Management***

JUNE

**10**

6:30 PM - 8:30 PM

***Indoor & Outdoor  
Safety***

JUNE

**24**

6:30 PM - 8:30 PM

***Breastfeeding  
Basics***

Register on  
[www.wvstars.org](http://www.wvstars.org)

## CPR & First Aid Classes

This list of agencies offering First Aid and CPR is made available to you for resource purposes only.

**Link CCR&R is not responsible for the following trainings or registration for these trainings.**

**Boone County:** Kanawha Co. Red Cross: Call 340-3650 or [www.redcross.org](http://www.redcross.org)

**Cabell County:** Vicki Delaney: Call or Text 606-547-6144 or Email [paths20@aol.com](mailto:paths20@aol.com)  
American Red Cross: Call 304-526-2900  
Cabell County EMS: Contact Lisa Cooper 304-526-9797  
Salt Rock Fire Dept.: Call 304-733- 9040  
Goodwill Industries of KYOWVA Area, Inc.: Contact Andrea Lupson 304-523-7461 ext.417

**Lincoln County:** Dorothy or William Frazier: Call 304-778-3873

**Logan County:** LEASA County Public Rescue: Call 304-752-0917  
Logan Regional Medical Center: Contact Cindy Fleming—Education Dept. 304-831-1556

**Mason County:** Pleasant Valley Hospital: Call 304-675-4340

**Putnam County:** Active Sports Complex (aka Ayash Center): Contact Scott Nasby 304-741-4079

## **CPR & FIRST AID CLASSES**

Available in Boone, Cabell, Lincoln, Logan,  
Mason, Mingo, Putnam and Wayne Counties!



**CPR** is not  
just a skill; it is  
a gift of life.





# YOU'VE GOT TRAILS

Quarterly Tidbits From Your TRAILS Team



## CHILD CARE PROVIDER

DO'S & DON'TS	
<p><b>yes</b></p> <p><b>CONTRACT</b></p> <p>Do create and use a basic contract and policies right from the start.</p> <p><b>HOURS</b></p> <p>Set your days and hours of operation and encourage your clients to stick with them. Make exceptions the exception.</p> <p><b>BE FLEXIBLE</b></p> <p>Listening to clients needs may lead to a new service and help you expand your business.</p> <p><b>ENFORCE</b></p> <p>Be the first one to follow your business policies and procedures and your clients will follow.</p> <p><b>TIME OFF</b></p> <p>Taking care of kids is hard work. Schedule time off to regenerate and refuel your nurturing spirit.</p>	<p><b>No, No</b></p> <p><b>FORCE A FIT</b></p> <p>Not everyone will be a good fit for you or your business. Realizing it will make saying no a little easier.</p> <p><b>OVERSENSITIVE</b></p> <p>Don't be discouraged or upset when your advice is not adhered to. Parents need time to learn to trust your insight.</p> <p><b>SELL YOURSELF SHORT</b></p> <p>This is your profession and it is a REAL JOB! Respect your time and hard work. Your clients will too.</p> <p><b>BE A PUSHOVER</b></p> <p>Many a provider has been burnt out simply because they didn't say the magic word NO! Learn to grow a backbone.</p> <p><b>FORGET RULES</b></p> <p>Parents are usually unaware of the regulations and policies a provider must adhere to. Don't say yes when the rule says NO!</p>

[thrivingchildcare.com](http://thrivingchildcare.com)



[adabofgluewilldo.com](http://adabofgluewilldo.com)

**TRAILS has lots of new things in store for you in 2025!**

**Be on the lookout for new inventory, new incentives, a larger selection of art consumables, and more!**

**Scan the QR code visit our website!**



## Your TRAILS Team



Melisa Dennison  
TRAILS Early Childhood Specialist  
[Melisa.A.Dennison@wv.gov](mailto:Melisa.A.Dennison@wv.gov)  
304-523-9540 Ext. 3462



Amber Swindler  
TRAILS Early Childhood Specialist  
[Amber.L.Swindler@wv.gov](mailto:Amber.L.Swindler@wv.gov)  
304-523-9540 Ext. 3480





# HOW TO REQUEST FROM SOUTRON



1

## LOG INTO SOUTRON

Log into Soutron using the username and password provided by TRAILS.

2

## SEARCH FOR TOYS

Search for toys by either typing in key words or searching by interest area. Bonus tip: You can also filter results by age!

3

## CHECK THE BOX

Click the box to the right of the desired item. If item says “1 copy currently available,” then we have it in stock right now!

4

## REQUESTING ITEM

Click “Actions” in the left corner, then click “Request.” A new screen will load.

5

## ENTER EMAIL

Click “Add address” and enter your email address.

6

## COMPLETE REQUEST

Click “Complete Request” in the bottom right corner.

7

## YOUR TOYS ARE ON THE WAY!

TRAILS will deliver your requested items (if available) at your next visit!

**Attention  
Providers**

Are you looking for ways to network and collaborate with other providers? Come join us to connect with and share some of your favorite tips, tricks and resources with other eager providers!

## **CARING AND SHARING COLLABORATIVE PARTNERSHIPS**



Resources Survey



Date/Time/Location TBD

For More Information  
Contact

Amy Willis



304-528-3443



[Amy.D.Willis@wv.gov](mailto:Amy.D.Willis@wv.gov)



The West Virginia Breastfeeding-Friendly Child Care Designation (BFCCD) offers resources to child care providers who support breastfeeding mothers. A child care provider enrolled in the initiative will receive support from Infant/Toddler Specialists, Child Care Nurse Health Consultants, and Child Care Health Educators to complete the 10 steps of the initiative. Upon completion of the 10 steps, the site will receive a certificate of designation in addition to help with resources and start up.

FOR MORE INFORMATION,  
PLEASE CONTACT YOUR  
INFANT TODDLER COACHING  
SPECIALIST AT LINK CCR&R:

Samantha Davenport  
Samantha.D.Davenport@wv.gov  
304-523-9540 ext. 3479

#### TO APPLY FOR THE BREASTFEEDING- FRIENDLY CHILD CARE DESIGNATION:

1. Go to [wvit.org](http://wvit.org)
2. Click on BFCCD at the top of the page.
3. Read through the initiative description, including the 10 steps to receive the designation.
4. Follow the directions to submit your application.



## FOOD REIMBURSEMENT



For information about enrolling in the Family Child Care Food Program to help with the costs of meals and snacks you serve the children in your care, please contact the following agency:



### Central Child Care

Serving Boone County  
(304) 382-0797

### Pride of Logan County

Serving Logan County  
(304) 752-6868 or (304) 752-1047

### River Valley Family Child Care Food Program

Serving Cabell, Lincoln, Mason, Mingo, Putnam and Wayne Counties  
(304) 523-3417 ext.3446 or 1-304-751-5253

In accordance with Federal law and U.S. Department of Agriculture (USDA) policy, this institution is prohibited from discriminating on the basis of race, color, national origin, sex, age, or disability. To file a complaint alleging discrimination, write USDA, Director, Office of Civil Rights, 1400 Independence Avenue SW, Washington, DC 20250-9410 or call, toll free, (866) 632-9992 (Voice). Individuals who are deaf, hard of hearing or have speech disabilities may contact USDA through the Federal Relay at (800) 877-8339 or (800) 845-6136 (Spanish). USDA is an equal opportunity provider. and employer.



## Fruity Breakfast Tacos

### Ingredients:

Pancakes  
Fruit of Choice  
Yogurt/Peanut Butter/Nutella



### Directions:

1. Have children spread a spoonful of yogurt, peanut butter, or Nutella onto a prepared pancake.
2. Top with fruit of choice.
3. Fold into taco shape.
4. Eat and enjoy!



# FAMILY CHILD CARE COMMITTEE



## Contact Us For More Information :

Kathy Baker  
Tiffany Gale  
[wvfamilychildcarecommittee@gmail.com](mailto:wvfamilychildcarecommittee@gmail.com)



## MEETING DATES 6:00PM

- October 21st, 2024
- January 20th, 2025
- April 21st, 2025
- July 21st, 2025

The West Virginia Family Childcare Committee supports family childcare providers statewide by promoting best practices, advocating for supportive policies, and offering resources and training. By fostering collaboration, the committee ensures childcare settings are safe, nurturing, and educational, ultimately benefiting families and communities across West Virginia.



## CABELL/WAYNE FAMILY CHILD CARE ASSOCIATION



The Cabell Wayne Family Child Care Association would like to invite ALL providers from ALL counties to join. If you have any questions, feel free to call or text Kathy Baker, President, at 304-638-7578, or email her at [mrskathys@comcast.net](mailto:mrskathys@comcast.net) so you can start receiving information about the Association and other helpful information. They would like to have all providers' email addresses, so please email Kathy at the address above to be added to the listserv. They hope to see lots of new providers at the meetings.



Are you interested in making \$6 more per child per day???? If so, contact Kathy Baker at 304-638-7578 or email at [mrskathys@comcast.net](mailto:mrskathys@comcast.net) for more details.



*"Spring's greatest joy, beyond a doubt, is when it brings the children out."*  
~ Edgar Guest



# WELCOME to our **Business Corner**

**In this space we hope to  
share valuable information to  
help you grow and sustain  
your child care business.**

**Below is information about organizations who  
offer free business training and coaching.**

Advantage Valley offers FREE business coaching and training for Boone, Cabell,  
Lincoln, Mason, Putnam and Wayne counties.

<https://advantagevalley.com/entrepreneurship/>

<https://advantagevalley.com/contact/>

The WV Small Business Development Center offers FREE coaching and training  
opportunities

<https://wvsbdc.com/services/>

<https://wvsbdc.com/training/>

WV Business Link offers FREE training opportunities

<https://wvbusinesslink.com/events/>

If you would like more information, contact  
Cristie Dunbar, Link CCR&R Director at  
304-528-3406 or [Cristie.R.Dunbar@wv.gov](mailto:Cristie.R.Dunbar@wv.gov)

# COMING SOON

## LEADERSHIP SUMMIT: PROGRAM ADMINISTRATION TOOLS FOR HIGHER QUALITY

Attention Child Care Directors!

Please join our Quality Improvement Specialists for a one day professional development summit discussing us of the Program Administration Scale to improve overall program quality.

Date and location to be announced soon!



## Provider Appreciation 2025

**Save the  
Date**

**Thursday, May 1st**





**LINK CHILD CARE  
RESOURCE &  
REFERRAL**

Link Child Care Resource & Referral is a program of River Valley Child Development Services, Inc. and is being presented with financial assistance as a grant from the West Virginia Department of Human Services.

Visit us on the web:  
[www.linkccrr.org](http://www.linkccrr.org) or  
[www.rvcds.org](http://www.rvcds.org)

**COME SEE US!**



**MAIN LINK OFFICE**

611 7TH AVE.  
HUNTINGTON, WV 25701  
(800) 894-9540 OR  
(304) 523-9540  
(304) 697-4821 FAX



**LOGAN OFFICE**

19 CIRCLE DR.  
LOGAN, WV 25601  
(304) 752-3932  
(304) 752-2897 FAX

Link Child Care  
Resource &  
Referral  
611 7th Avenue  
Huntington, WV 25701



[www.facebook.com/](http://www.facebook.com/)

