



# NewsLink

## April, May & June 2006

### *Help us Meet Your Needs. Complete our new Needs Assessments On-Line...*

Link Child Care Resource and Referral is conducting surveys to better improve our services to child care providers and those people in need of child care services in Cabell, Boone, Lincoln, Logan, Mason, Mingo, Putnam and Wayne Counties. There are four different surveys:

- People using or in need of child care services.
- People in need of Pre-School or School-Age services.
- Providers of child care services
- People in need of Training Services

Please go to [www.rvcds.org](http://www.rvcds.org) (see information on left hand side) and choose the survey which best describes you. We will use this information to help improve the services we offer!



### Link Child Care Resource & Referral

A Program of River Valley Child Development Services

Funded through the West Virginia Department of Health and Human Resources, Bureau for Children and Families, Division of Early Care and Education.

#### *Inside this issue:*

Important Updates	1
Behavior Support Column	2
FDC Food Program	3
Training Calendar	4-5
CPR and First Aid Classes	6
Family Child Care Associations	7

3rd Annual Basket Auction  
Huntington Area Early Childhood Conference  
April 28-29, 2006



We welcome all daycare centers and family childcare providers to donate a basket for the auction.

If you are interested in donating a basket contact Kathy Baker at 529-6246 for more details and drop off information.

**Remember:**  
**To avoid interruption of your Child Care Payments,**  
**don't forget to check the end dates on your child care certificates.**

A Limited Number of Stipends for Family Child Care Providers to attend the **HAEC Conference**, on April 28 & 29 are now available. Contact Mary Bridgette at Link (523-9540 or 1-800-894-9540) for more information.

## Behavior Support Specialist

For this newsletter I'd like to ask, and answer, a question to emphasize the importance of what we do for and with children. Go to any reputable source, by that I mean major medical/psychological journals, and you will find a strong, overwhelming consensus regarding the most important time in a person's life. Care to guess when that is?

It is not when primary school starts, nor when puberty hits, not when entering high school, learning to drive or beginning to date. It is not leaving home to enter college or start a job or when wedding bells ring. It is a time long before retirement. The most important time in a person's life is from birth, (and before) to approximately 6 or 7 years of age. By the time a person reaches that age, almost 80% of all that person will learn **in their life!** has been learned. The ability to move, communicate, regulate; how to interact with the environment, including the people in it, sense of self, sense of trust, sense of humor, sense of fear, just to scratch the surface. Consider that. The most critical time of human existence is early childhood.

As someone who visits childcare environments regularly, I am often amazed at the way many interact with and educate young children. I am often there due to a child's difficult behaviors and the situations are stressful beyond the inherent stress that comes with caring for and educating the very young. Yet, there is often an underpaid over-

worked teacher, patiently helping two children resolve a conflict, comforting another child who misses Mom or Dad, creating a learning opportunity at the 'messy table'; and all the while thinking about what's next. At the same time that teacher is trying to enhance and maintain a positive relationship, with the child I'm there to see, and that child's often stressed out parent(s). It is a job for a select few. This article has no profound strategy for behaviors or solutions to the stressors early care and education may hold. The attempt here is to underline the magnitude of impact a quality early care and education program will have on every young person's life. You, as a teacher, will see only a fleeting glimpse of your impression on a child's life. It will be when the child begins primary school, as the child grows through puberty, enters high school, learns to drive, falls in love and proceeds through life, that the full impact of your contribution to that child's life will be experienced; for better or worse. What you do will last a lifetime.

This article is to remind us of our responsibility to children and to thank you for your contribution to the most important time in a person's life. Thank You for the positive impacts you have on children.



Saun Floyd is the Behavior Support Specialist at Link .  
You can reach Saun at 523-9540 or 1-800-894-9540 or on the web at [www.RVCDs.org](http://www.RVCDs.org)

### Cabell-Wayne Family Child Care Association News

We would like invite all family child care providers to join us. We offer encouragement, assistance, referrals, and trainings. If you would like to talk with others that are doing the same job as you, come join us at one of our meetings.

May 6th - 10:00-11:00  
Guyandotte Library



July 8th - 10:00-12:00  
Guyandotte Library

Renee Childers will be doing a training

If you have any questions feel free to call Kathy Baker at 529-6246

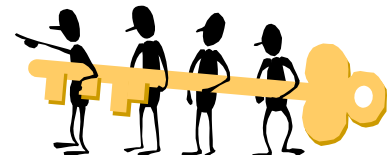
Submitted by Kathy Baker

### Attention Boone, Logan and Mingo Family Child Care Providers

Would you like to be a part of a new Family Child Care Association being developed in your area? Please come to our next meeting at **Kiddie Kollege in Logan on Saturday May 20, 2006 at 12:00**. The purpose of this Child Care Association is to support registered providers and the families they serve, create public awareness, create a network of providers that could serve as role models for new providers and share professional knowledge and expertise in the area of child development by providing guest speakers and addressing specific topics.

Please come and enjoy yourself by supporting other providers who support children through love and commitment of quality child care. We

want to bring professional standards to all providers caring for our children. A **training on "It's Fun to Be Fit"** (see training calendar on page 5) will be held from **10:00—12:00** on the same day. This meeting will immediately follow the training. If you would like to attend this meeting, please call Kathy Meadows at 1-800-894-9540.



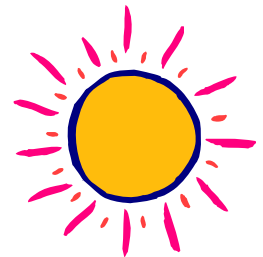
## Training Opportunity for Caregivers of Children ages 2 1/2 through 5: Components of Quality Care and Education Modules



Components of Quality Care and Education Modules trainings are being offered by Link CCR&R beginning April 24, 2006 at the West End Library. This training unit is an eight week course that runs consecutively over eight Mondays from 9:00am- 1:00pm. The class dates are Mondays April 24, May 1, 8, 15, 22, June 5, 12 and Tuesday, June 20. The trainings are for providers working with children ages 2 1/2-5 years of age. Providers will receive thirty-two (32) hours of professional development for successfully completing the entire eight week course; as well as resources to use in their early childhood program.

A requirement of these training modules is a pre-and post-on-site visit by the Training Specialist with each provider enrolled in the training. **Registration Deadline is Friday, April 14.** Participants need to attend all scheduled sessions. Providers must be on the participant list in order to attend these sessions. **No walk in or stand by participants will be accepted and there will be no waiting list for individual sessions.** The training Modules are: #1 Extreme Makeovers-Space & Furnishings, #2 Not Just Routine, #3 For the Love of Literacy, #4 Implementing Your Curriculum, #5 Recipe for Relationships, #6 Building Blocks: A Program's Structure, #7 Including All Children: Provisions for Children with Special Needs and #8 Communication is the Key. Providers interested in this training opportunity need to call Kathy Meadows at 523 -9540 or 1-800-894-9540 ext.229 to register. **This class will be limited to 15 participants.**

Would you like to have access to information regarding your provider payment and service client?  
**FACTS Plus** is for you.  
For more information visit <http://facts.wvdhhr>.



### Looking for Information on **ACCREDITATION?**

You've found it!

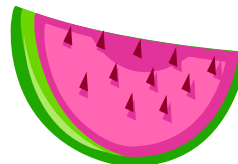
Family Child Care Providers can log on the web at [www.nafcc.org](http://www.nafcc.org) or call 1-800-359-3817.

Child Care Centers can log on the web at [www.naeyc.org](http://www.naeyc.org) or call 1-800-424-2460.

Contact WVETCR to inquire about financial support for the application process at 1-888-983-2827.

### Need Help With Food Costs?

The Child Care Food Program provides reimbursement to eligible day care providers who serve nutritious well-balanced meals and snacks, and helps to develop positive eating habits for young children enrolled in Family Child Care Homes.



**For more information contact your local Food Program:**

Central Child Care  
Serving Boone County  
382-0797

River Valley Family  
Day Care Food Program  
Serving Cabell, Wayne, Lincoln,  
Putnam, Mason and Mingo Counties  
523-3031 or 1-800-581-3031

Pride of Logan County  
Serving Logan County  
752-6868 or 752-1047

*In accordance with the Federal Law and the U.S. Department of Agriculture policy, this institution is prohibited from discrimination on the basis of race, color, national origin, gender, age, or disability. USDA is an Equal Opportunity Employer. The Child Care Food Program is funded through the U.S. Department of Agriculture and is administered by the West Virginia Department of Education.*

# Training Calendar

**Family Child Care Providers** must complete two (2) hours of Health/Safety/Nutrition training plus an additional six (6) hours of training in three (3) other core competency areas (see list on right) each year according to the date on your individual certificate of registration.

\*You must call Link at 523-9540 or 1-800-894-9540 at least 24 hours before the training to register or to cancel.

\*You may not bring children to any Link training session.

\*You must bring a picture ID to all Trainings.

\*You must arrive at the scheduled time. Late arrivals may not receive training credit.

To help you identify the Core Knowledge you need to meet your Training requirements please use the following codes which are located in the column following each training title:

- CGD—Child Growth and Development
- HSN—Health, Safety and Nutrition
- PIR—Positive Interactions & Relationships
- COA—Child Observation and Assessment
- FC—Family and Community
- C- Curriculum
- P- Professionalism
- PM- Program Management



 The WV Infant/Toddler One Step at a Time Training  Program has gotten a facelift! The New and Improved West Virginia Infant/Toddler (WVIT) Professional Development Program for Caregivers Modules will be available this summer. Sue Knisely has been hired as the new Infant/Toddler Specialist at Link. Contact Sue at 523-9540 or 1-800-894-9540 with questions. Look for more information about this new Module Training in the June Newsletter.

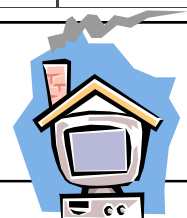
The information included in the training calendar can help you make informed decisions about the training sessions that are offered and which will best meet your needs. We have added a new piece of information to the training calendar. The Tier, listed after the Core Competency, is the level of the training. Tier I is a beginner level session, Tier II is an intermediate level session and Tier III is an advanced level training.

Date of the Training	Title of the Training	Core Comp.	Tier	Location of the Training	Time of Training
<b>Cabell and Wayne Counties</b>					
Tues. April 11	Circle Time Activities	C	I	Milton Library	5:00—7:00
Tues. April 11	Child Abuse, No Excuse!	HSN	III	Main Library—5th Ave.	6:30-8:30
Tues. April 11	ECERS-R	PIR	III	Main Library—5th Ave.	6:30-8:30
Beginning April 14	Components of Quality Care and Education Modules (See page 3 for details)	Varies	I	West End Library	9:00—1:00 each day
Thurs. April 20	Good Health Habits Start Early	HSN		Wayne Library	3:00—5:00
Thurs. May 4	Building Positive Self Concepts	C	II	C-K Library	12:00-2:00



Sat. May 6	Routines with Rhythm	C		Beverly Hills Baptist	9:30-11:30
Sat. May 6	Hurry to Handle Your Fury	PIR	II	Beverly Hills Baptist	11:30-1:30
Sat. May 6	Child Nutrition	HSN	I	Beverly Hills Baptist	2:00-4:00
Sat. May 6	Infant/Toddler Environments	CGD	II	Beverly Hills Baptist	4:00-6:00
Thurs. June 8	Room Design and Discipline	PIR	II	Gallaher Library	2:00- 4:00
Thurs. June 15	Circle Time Activities	C	I	C-K Library	3:00-5:00
Mon. June 21	Dev. App. Games & Activities for Infant/Toddlers	C	II	Barboursville Library	3:00-5:00
<b>Logan, Mingo and Boone Counties</b>					
Thurs. April 13	School Age Survival	CGD	II	Kiddie Kollege	3:00 -5:00
Thurs. April 13	Good Health Habits Start Early	HSN		Kiddie Kollege	5:00-7:00
Mon. April 18	Child Nutrition	HSN	I	Mingo County DHHR	2:00 -4:00
Mon. May 15	Infant/Toddler Routines and Rituals	CGD	II	Boone Madison Library	2:00-4:00
Sat. May 20	It's Fun to be Fit	HSN	I	Kiddie Kollege	10:00-12:00
Thurs. May 25	Room Design and Discipline	PIR	II	Logan Library	3:00-5:00
Thurs. June 15	Building Positive Self Concepts	C	II	Living Waters-Williamson	6:00-8:00
Sat. June 17	Cognitive Development and Learning Part I	CGD	II	Kiddie Kollege	10:00-12:00
Sat. June 17	Cognitive Development and Learning Part II	C	II	Kiddie Kollege	12:00-2:00
<b>Lincoln County</b>					
Tues. April 18	Cooking in Child Care	HSN	II	Hamlin Library	5:00-7:00
Tues. May 30	Dev. App. Games Activities for Infants/Toddlers	C	II	Hamlin Library	1:00-3:00
Thurs. June 15	Professional Ethics in the Workplace	P	II	Hamlin Library	9:00-11:00
<b>Mason County</b>					
Tues. April 18	It's Fun to be Fit	HSN	I	Mason County Library	4:00-6:00
Sat., May 20	Circle Time Activities	C	I	Mason County Library	9:00-11:00
Thurs. June 8	Professional Ethics in the Workplace	P	I	Mason County Library	2:00-4:00
<b>Putnam County</b>					
Mon. April 24	Teaching Tolerance	PIR	II	Forrest Burdette	9:00-11:00
Fri. May 12	Infant/Toddler Environments	CGD	II	Lighthouse	2:00-4:00
Sat. June 10	Child Abuse, No Excuse!	HSN	III	Almost Home Day Care	10:00-12:00

You can download the training calendar  
on the web at [www.wvdhhr.org/Link](http://www.wvdhhr.org/Link)



We are no longer offering **First Aid and CPR** . This list below is made available to you for resource purposes only. **Link is not responsible for the following trainings or registration for these trainings.**

**Boone County**

First Aid and CPR available at **Kanawha Co. Red Cross** (see above) or by request at **Charleston** 340-3650

**Cabell County**

First Aid and CPR available at **Triad Tech** 431 5th Ave. Huntington—529-7020. Cost is \$20 each.

CPR with First Aid available at **American Red Cross**. 1111 Veteran's Memorial Blvd. 526-2999.

First Aid and CPR available at **Salt Rock Fire Dept.** Instructor—Darrell Ennis. 733- 9040.

**Logan County**

First Aid and CPR available at **LEASA County Public Rescue** 26 1/2 Main Ave, Logan—752-0917.

Classes also available at **Logan Regional Medical Center** 831-1556.

**Mason County**

**Pleasant Valley Hospital** offers First Aid and CPR Classes. Call 675-4340 to make an appointment.

**Mingo County**

**Williamson Memorial Hospital**—235-2014, Ext. 147.

**Putnam County**

First Aid and CPR available at **Red Cross Building in Kanawha Co.**—1605 Virginia St. E. 340-3650 or [www-redcross.org](http://www-redcross.org).

Evening classes are available.

Classes also offered at **Red Cross Building in Putnam County**—3268 Winfield Rd. (Rt. 35) — 586-0238 or 340-3650

CPR and First Aid offered in So. Charleston by **Duff Ambulance Services** in Poca. 755-3355. Instructor—Fred Tillis.

CPR and First Aid is offered by Tina Kyle. 561-4674.

**Wayne County**

First Aid and CPR available. Instructor Kathy Parsons. 486-5991.

**You can contact local Hospitals or Fire Departments for other options.  
Remember all of these fees are tax deductible.**

**T.R.A.I.L.S. Van News**



You will see a new face on the T.R.A.I.L.S. Van, (at least to some of you). I am Paula Stewart the new T. R.A.I.L.S. Specialist. Virena is still with us. I have been working on the T.R.A.I.L.S Van, at Connect since June and am happy to be at Link. How nice it is to not have the long daily commute. It is fun visiting some long time friends while making new ones as we make the rounds. For 17 years I had a Family Child Care Home and then worked in a center for two years. This past December I graduated from Marshall with a BA in Family and Child Development.

*Look for the Van 1/2 hr before and 1/2 hr. after these trainings: Cooking in Child Care April 18, Lincoln Co., Circle Time May 20, Mason Co. and Circle Time June 15, Wayne Co.*

It is time to get on the road again; It will be a joy to see each and every one of you. Give us a call 523-9540 Ex. 430 to schedule a visit and let us know how else we can be of help to you.

Thanks, Paula & Virena

**We're Looking for New Family**

**Child Care Providers**

If you know anyone who may be interested in becoming a Provider, please ask them to call Link at 523-9540 or 1-800-894-9540 for more information!

**Vision Screenings for 3 & 4 year old Children**



Link Staff can provide vision screening for 3 and 4 year old children. For more information or to schedule a screening contact Link at 523-9540 or 1-800-894-9540.

Huntington Area Early  
Childhood Conference  
April 28 & 29, 2006  
Christ Temple Church

Leadership Institute  
April 27, 2006 Marshall University

### Location

Christ Temple Church  
2400 Johnstown Rd.  
Huntington, WV

### Tote Bags

The first 500 people to register will receive a free tote bag with the conference logo (bottom right) embroidered on the bag.

### Lunch Information

Box lunches will be available each day. The cost is \$6 per lunch. You will need to indicate that you will be purchasing lunch on the registration form. All boxed lunch orders and payment must be received by April 14. No lunch orders will be accepted after this date.

### Friday Lunch Menu:

Ham Sandwich (lettuce, cheese) OR  
Tuna served on a baguette

### Saturday Lunch Menu:

Turkey Sandwich (lettuce, cheese) OR  
Chicken Salad served on a baguette

### Lunch orders on each day will also include:

Condiments: mayo, mustard, salt and pepper  
Bag of baked potato chips  
A container of cole slaw or potato salad  
Soft Drink or Bottled Water

### Trolley Rides

The Trolley will be available during lunch break. A schedule of times and planned stops will be included in the program.

### Directions to Christ Temple Church:

From Charleston Take I 64 W to Huntington. Take Exit 8 (5th St.) Go through traffic light to enter I 64 W Entrance Ramp (Follow signs to Heritage Farm) **BEFORE** entering I-64 W, turn right on Johnstown Rd. then right at Christ Temple Church Entrance.

### T-Shirt Orders

Shirts will be available to purchase with the 2006 conference logo (below) embroidered in red and blue for \$10 per shirt. If you would like to order a shirt, please indicate the size on the registration form and include payment with your registration materials. All shirt orders and payment must be received by April 14. No orders will be accepted after this date.

### Literary Café

The Literary Café will be available all day Friday. Bring your favorite children's book and share the story with the group. Activity ideas, etc. are welcome.

### Silent Auction

Back by popular demand! You will have an opportunity to bid on some great items each day. "Winners" will be announced at the end of each day. All centers and family child care homes are encouraged to prepare a basket for the auction. For more information see page 1 of the newsletter.

### Leadership Institute

The Leadership Institute will be held at Marshall University on Thursday, April 27. The topic is "What are we Going to Do with These Boys" by Dan Hodgins.

### Stipends

Stipends are available for a limited number of family Child Care Providers. See page 1 for details.

### HA ECC Conference and Leadership Institute Registration Materials

For a complete registration packet, or if you have any questions, contact Nikki Rabel at (304) 523-9540 or 1-800-894-9540 or send e-mail to [nikkirabel@wvdhhr.org](mailto:nikkirabel@wvdhhr.org).

Registration Deadline is April 14.

Only on-site registration will be available after this date.



Link Child Care Resource and Referral  
c/o River Valley Child Development Services  
611 7th Ave., Suite 200  
Huntington, WV 25701  
523-9540 or 1-800-894-9540



NON PROFIT ORGANIZATION  
US POSTAGE  
**PAID**  
PERMIT NO. 43  
HUNTINGTON, WV

## **Family Child Care**

### **Provider Grants**

of up to \$250 are  
now available.

Contact Dante Jeter  
at Link for more  
information. The  
money can be used  
for resources  
required in the  
regulations or  
curriculum  
materials.



Link Child Care Resource & Referral  
Child Care Providers' Newsletter and Training Information

A Program of River Valley Child Development Services.  
Visit us on the web at or [www.wvdhhr.org/Link](http://www.wvdhhr.org/Link)